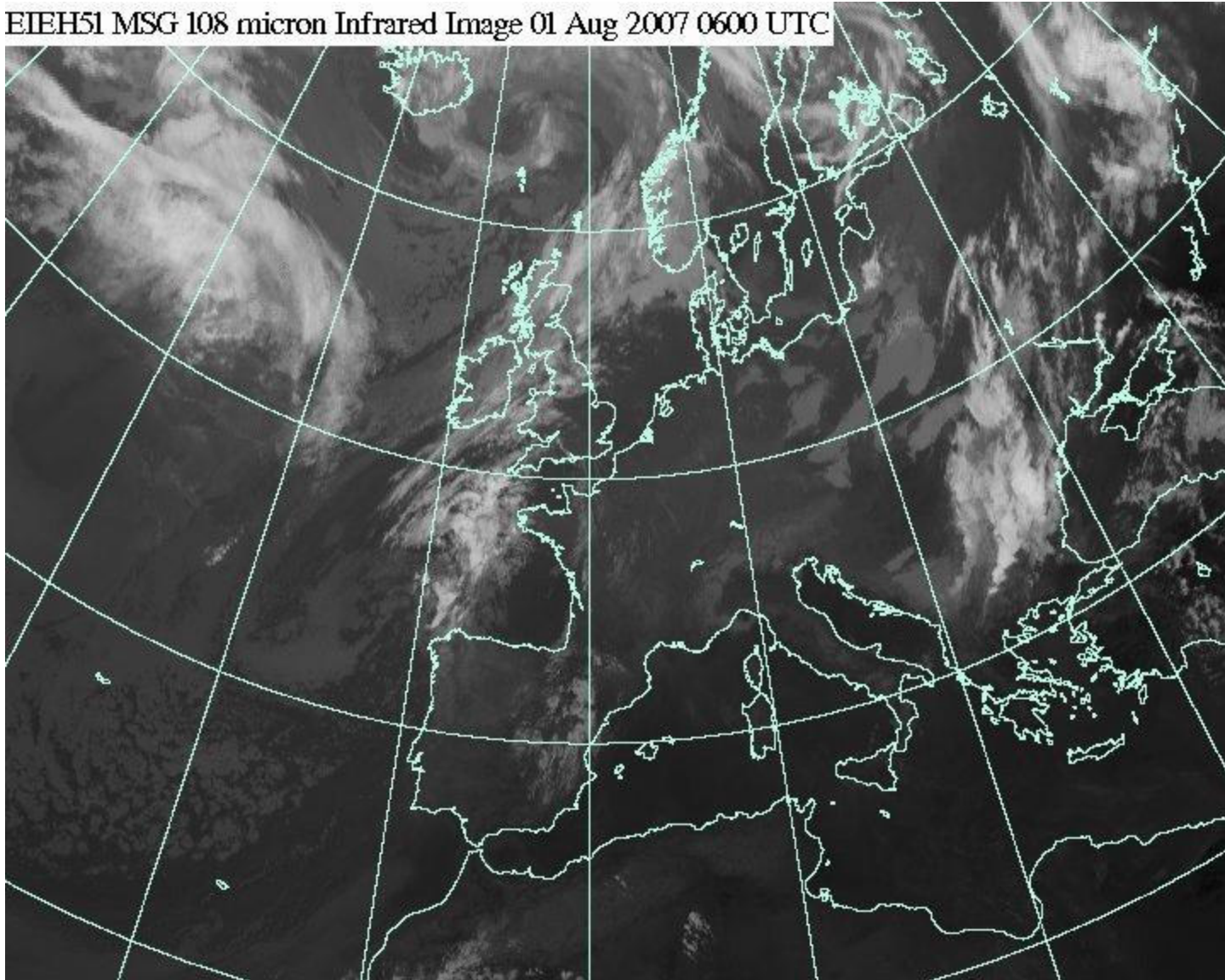


International Bailleau 2007

August 1<sup>st</sup>

# IR 6h TU

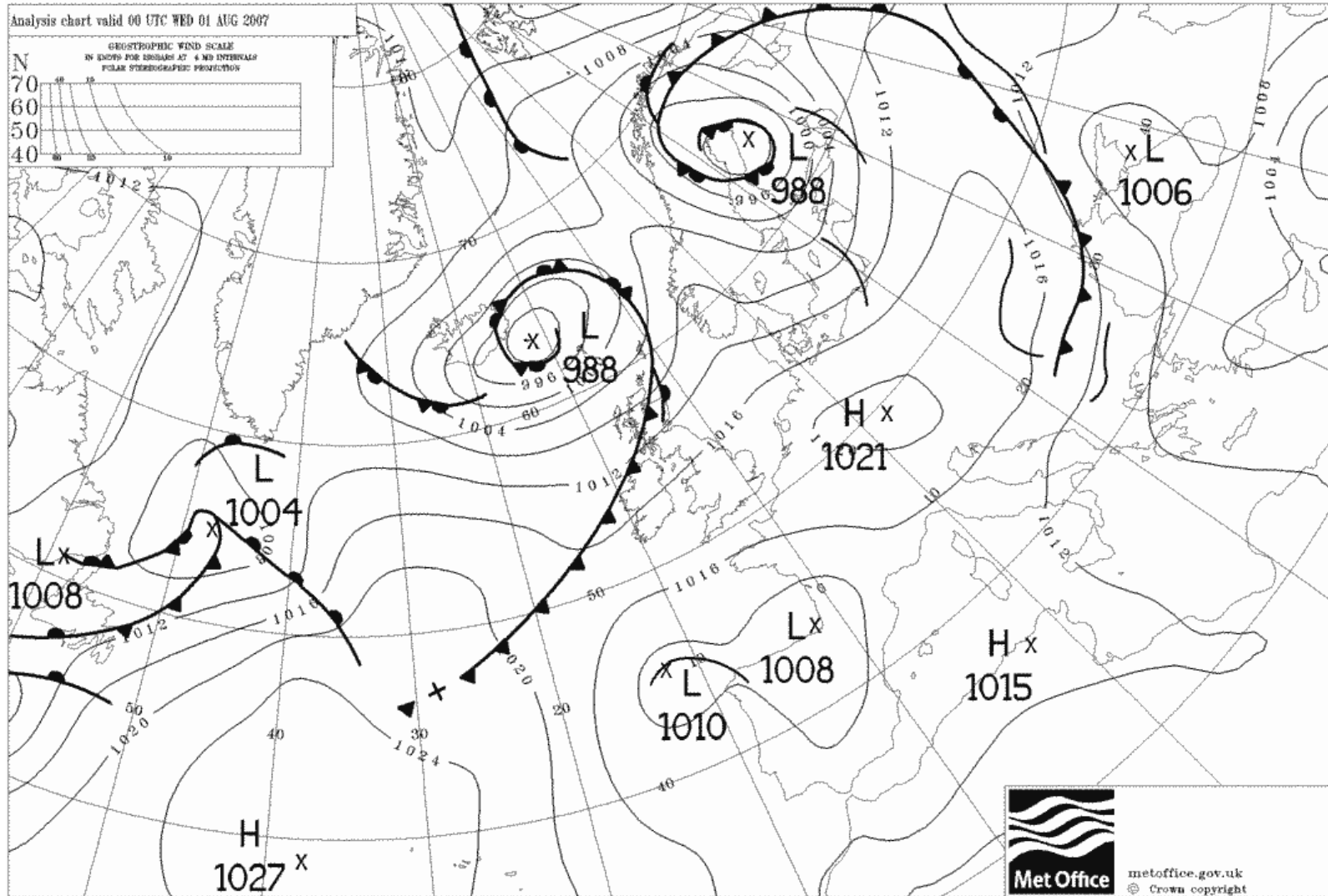
EIEH51 MSG 108 micron Infrared Image 01 Aug 2007 0600 UTC



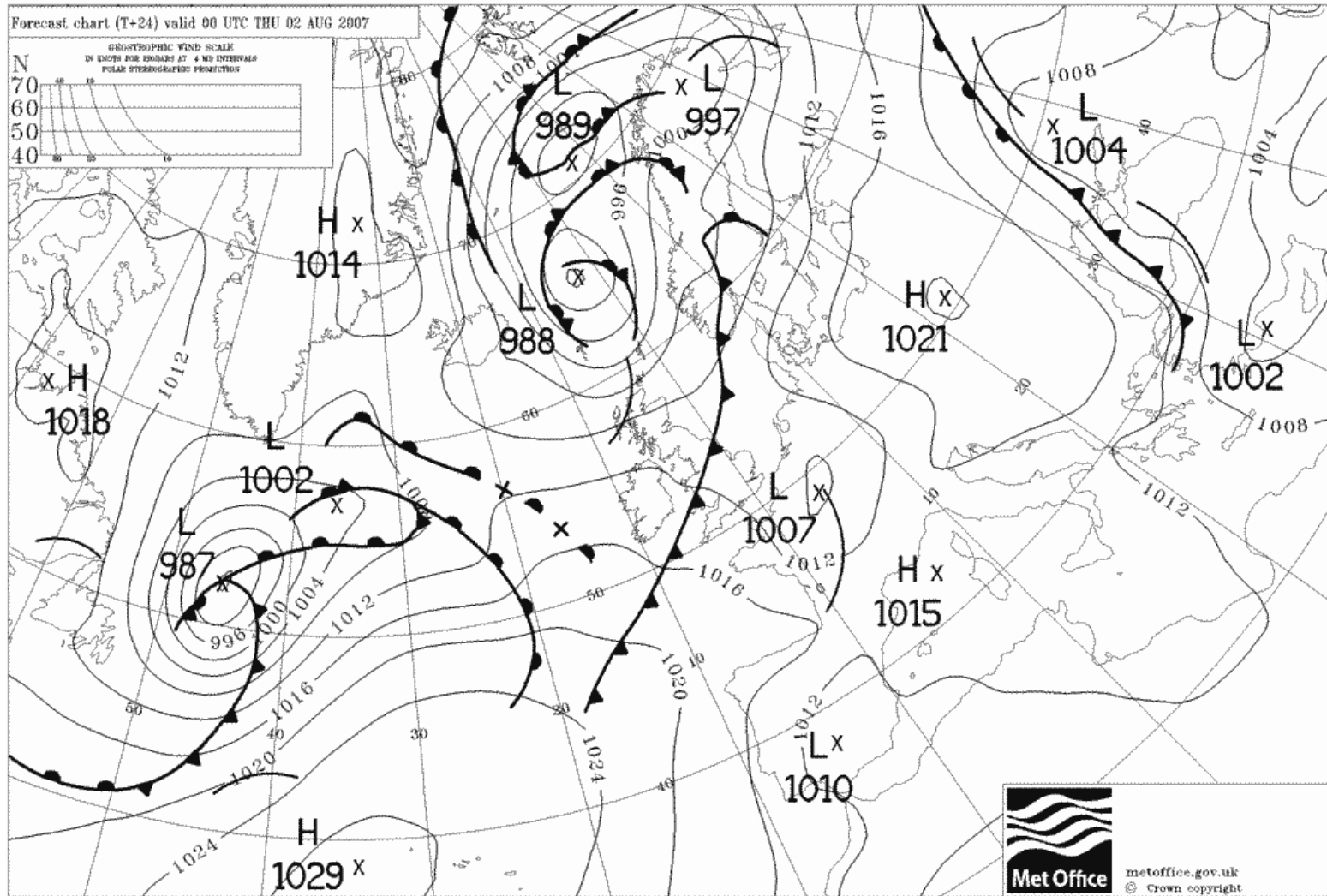
# VIS 6h TU



# Obs 00H TU

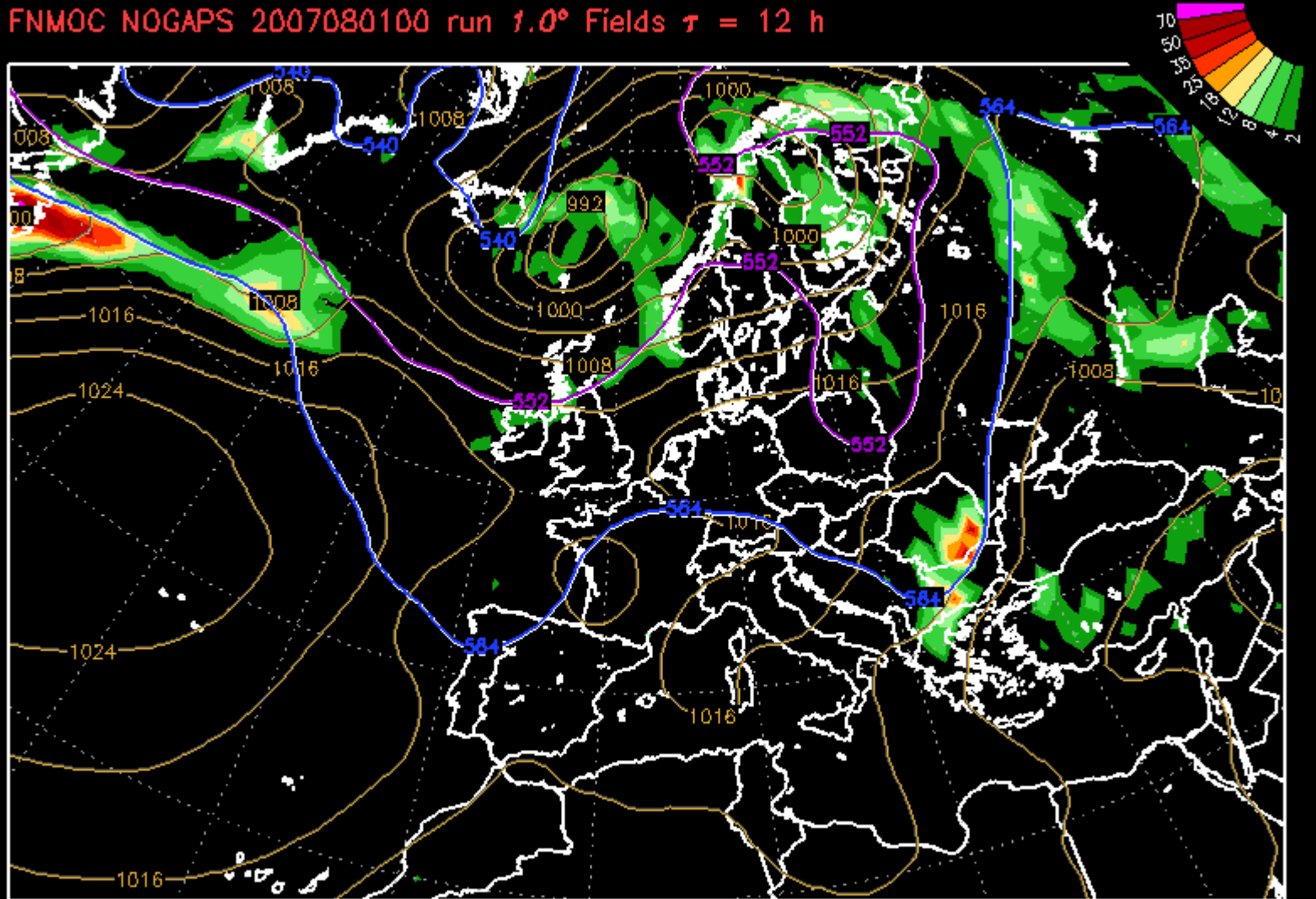


# To morrow 00H TU



# RAIN forecast today 12H TU

FNMOG NOGAPS 2007080100 run 1.0° Fields  $\tau = 12$  h

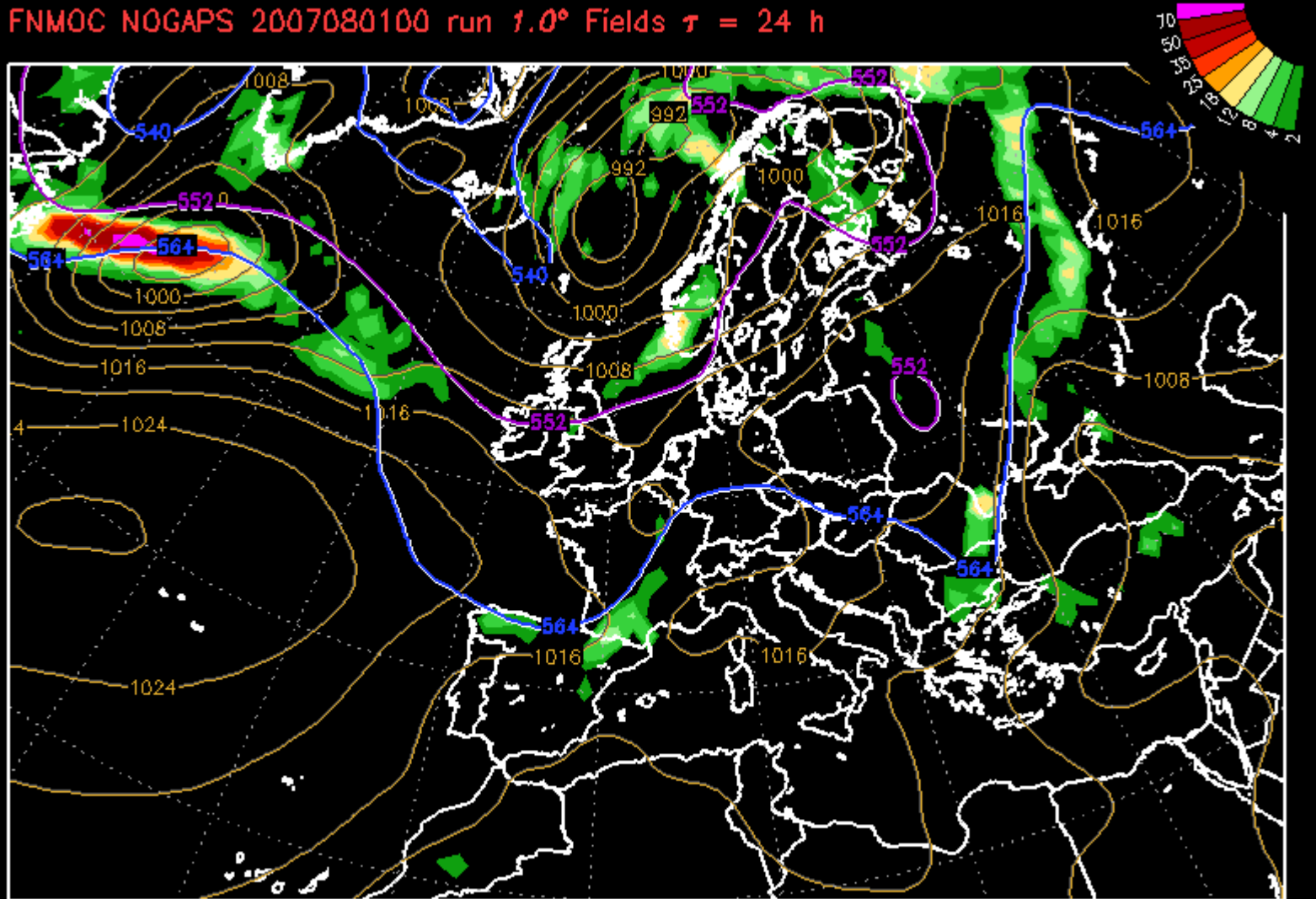


VT: Wed 12Z 01 AUG 07SLP [hPa]/540,528 thk Line/Prev 12hr Prop Rate [mm/12hr]

NOGAPS Data Courtesy of Fleet Numerical Meteorology and Oceanography Center, Monterey, CA  
GrADS (<http://grads.jgaa.org/grads>) Graphics by D.J.Lawa FNMOG ([dannis.lawa@navy.mil](mailto:dannis.lawa@navy.mil))

# RAIN Forecast tomorrow 00H TU

FNMOG NOGAPS 2007080100 run 1.0° Fields  $\tau = 24$  h

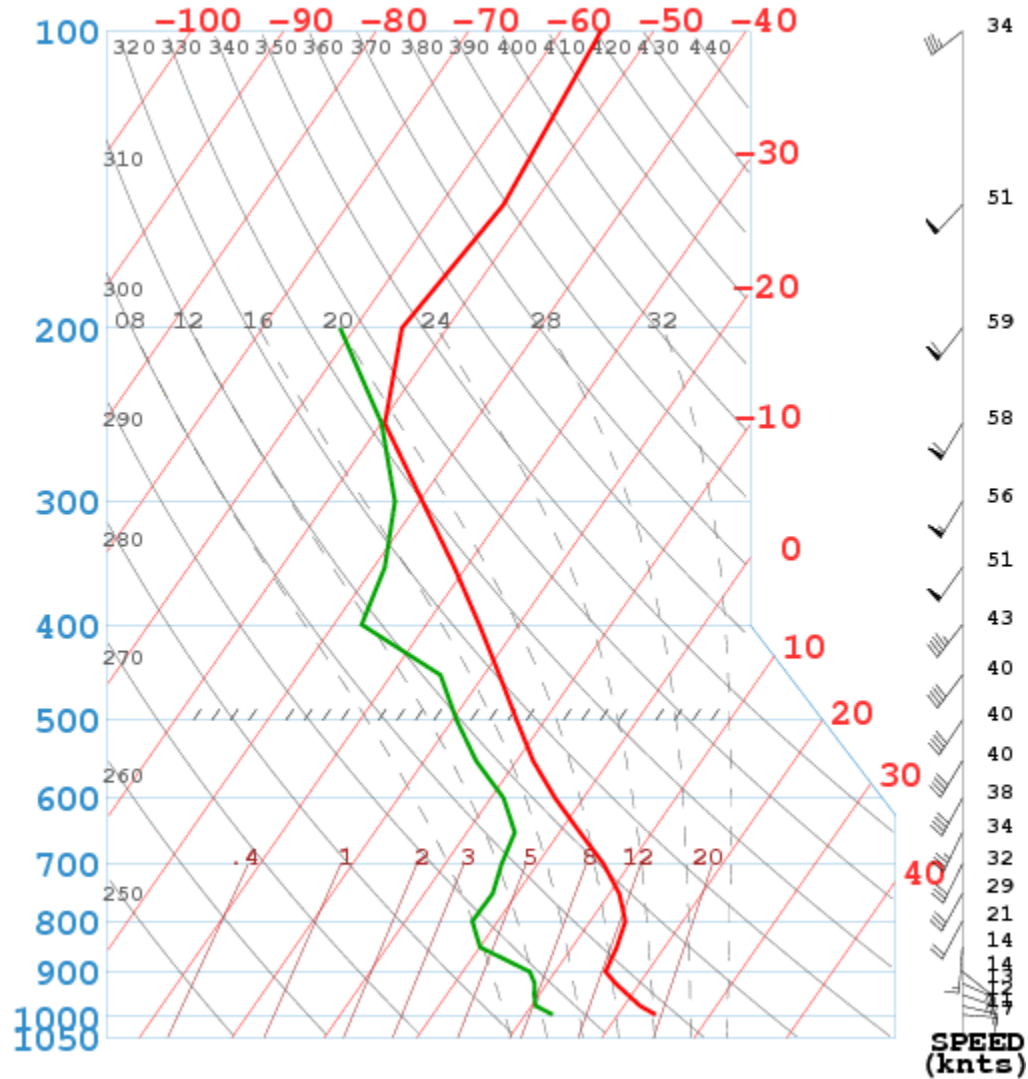


VT: Thu 00Z 02 AUG 07 SLP [hPa]/540,528 thk Line/Prev 12hr Prop Rate [mm/12hr]

NOGAPS Data Courtesy of Fleet Numerical Meteorology and Oceanography Center, Monterey, CA  
GrADS (<http://grads.jgaa.org/grads>) Graphics by D.J.Lawa FNMOG ([dannis.lawa@navy.mil](mailto:dannis.lawa@navy.mil))

# Sounding : Bailleau 12H TU

GFSENH



48.50 1.50 08/01/2007 15Z + 15hr



# Summary

- **Today = Difficult**
- **Talweg arriving ( next night)**
- **Convection- Begining: 13h local**
- **Take off + 15mn :800m pur Thermal**
- **Afternoon: 25° C 1000m ;1m/s; 0/8 cu**
- **Arrivals: 1000m; 1m/s; 0/8 cu**
- **End of convection : 17h30 local (50% Vza) ( cirrus arrival)**
- **Sky paints with cirrus all day , worse late afternoon**
- **QNH:1013 Hpa**
- | <b>Wind</b>     | <b>ground</b> | <b>1000m</b>    | <b>1500m</b> | <b>2000m</b> |
|-----------------|---------------|-----------------|--------------|--------------|
| <b>Take off</b> | <b>090/ 8</b> | <b>110 / 10</b> |              |              |
| <b>Arrivals</b> | <b>110/ 8</b> | <b>130 / 10</b> |              |              |

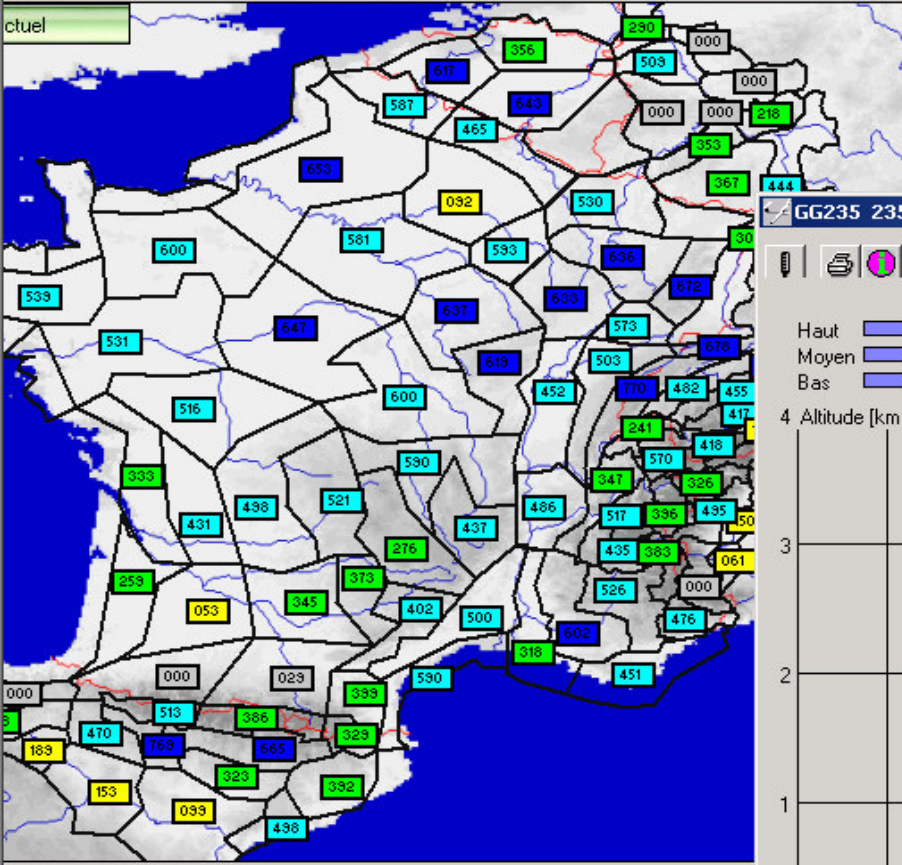
# TOPTHERM

pc\_met32 2007.01 Build 708 (User Vol à Voile) Desktop Version

pc\_met32 Demande Visualisation Configurations Fenêtre Aide

révision pour DI 31.07.2007 du 31.07.2007 00 UTC

ctuel



Ile de France

Début de convection :	09:00 UTC
Fin de convection :	18:00 UTC
PFD therm. :	581 km
PFD therm. max. :	84 km
PFD therm. max. UTC :	13:00 UTC

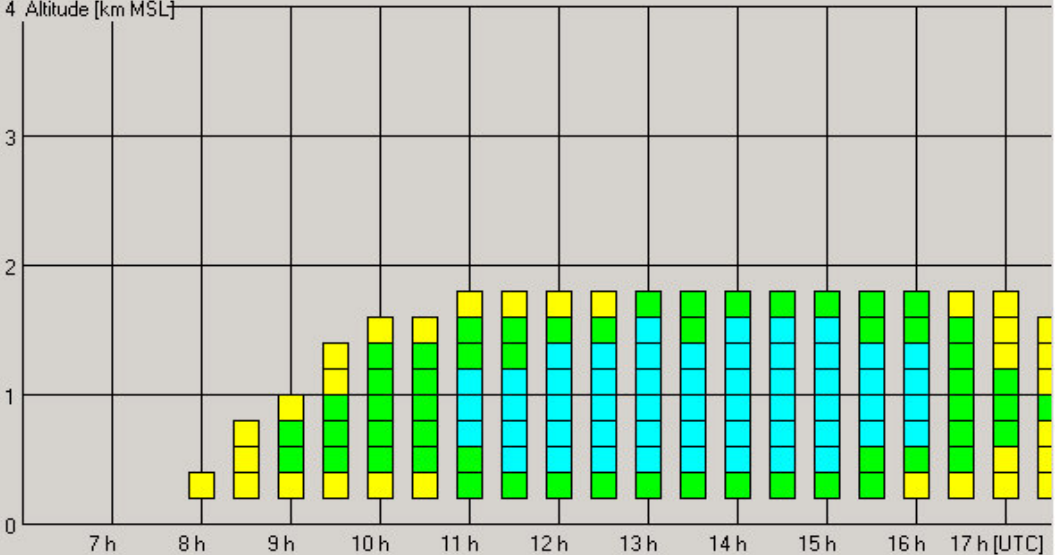
GG235 235 Ile de France , Di 31.07.2007

Haut

Moyen

Bas

4 Altitude [km MSL]



08 09 10 11 12 13 14 15 16 17

Prévision pour DI 31.07.2007 , SYNOP 06Z

TopTask Préparation de vols

TopTask Compétition

Démarrer

pc\_met32 2007.01 Bui...

Mise à jour Java Update disponible

Une nouvelle version de Java est prête à être installée. Cliquez ici pour Continuer.

09:34