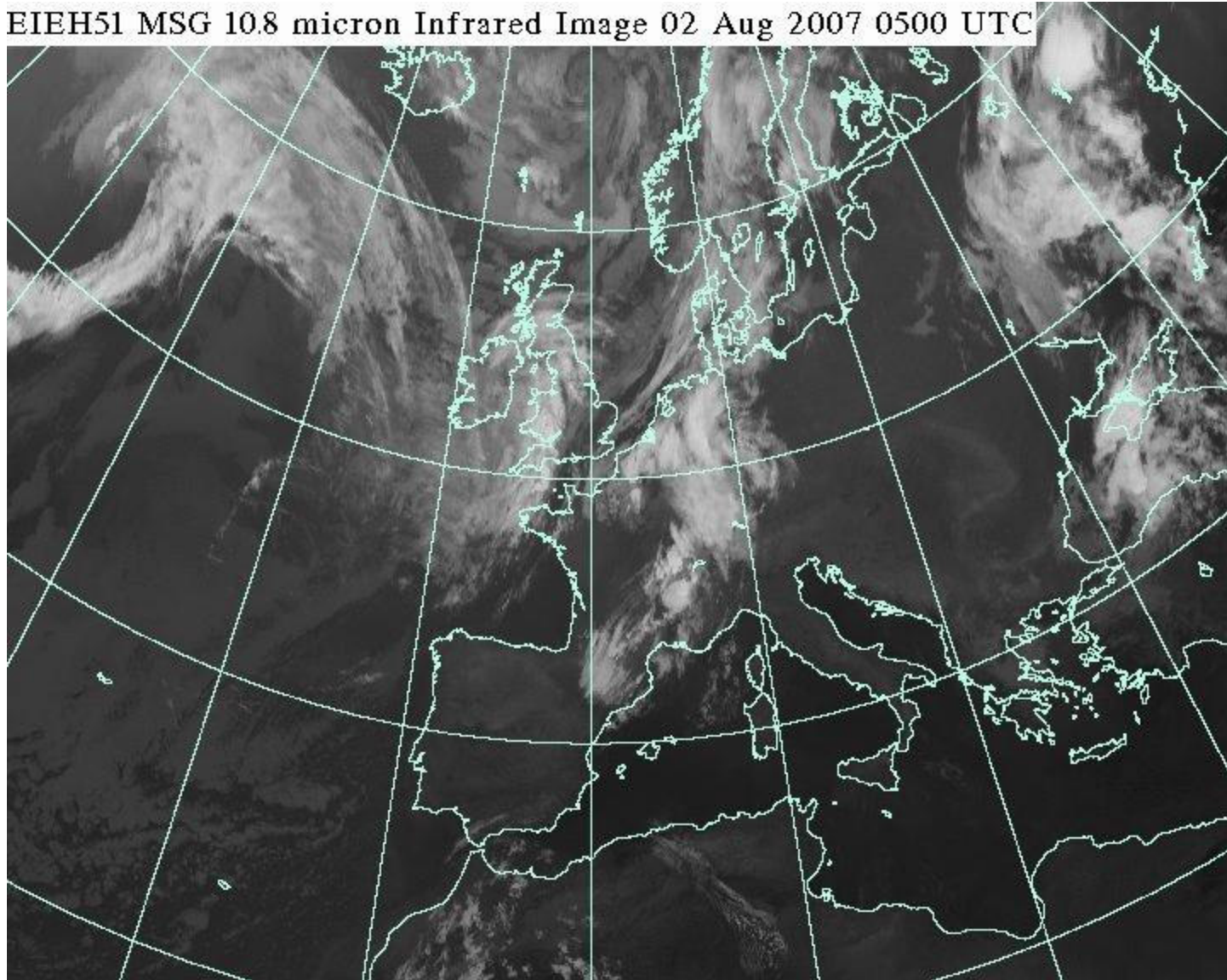


International Bailleau 2007

August 2 nd

IR 5h TU

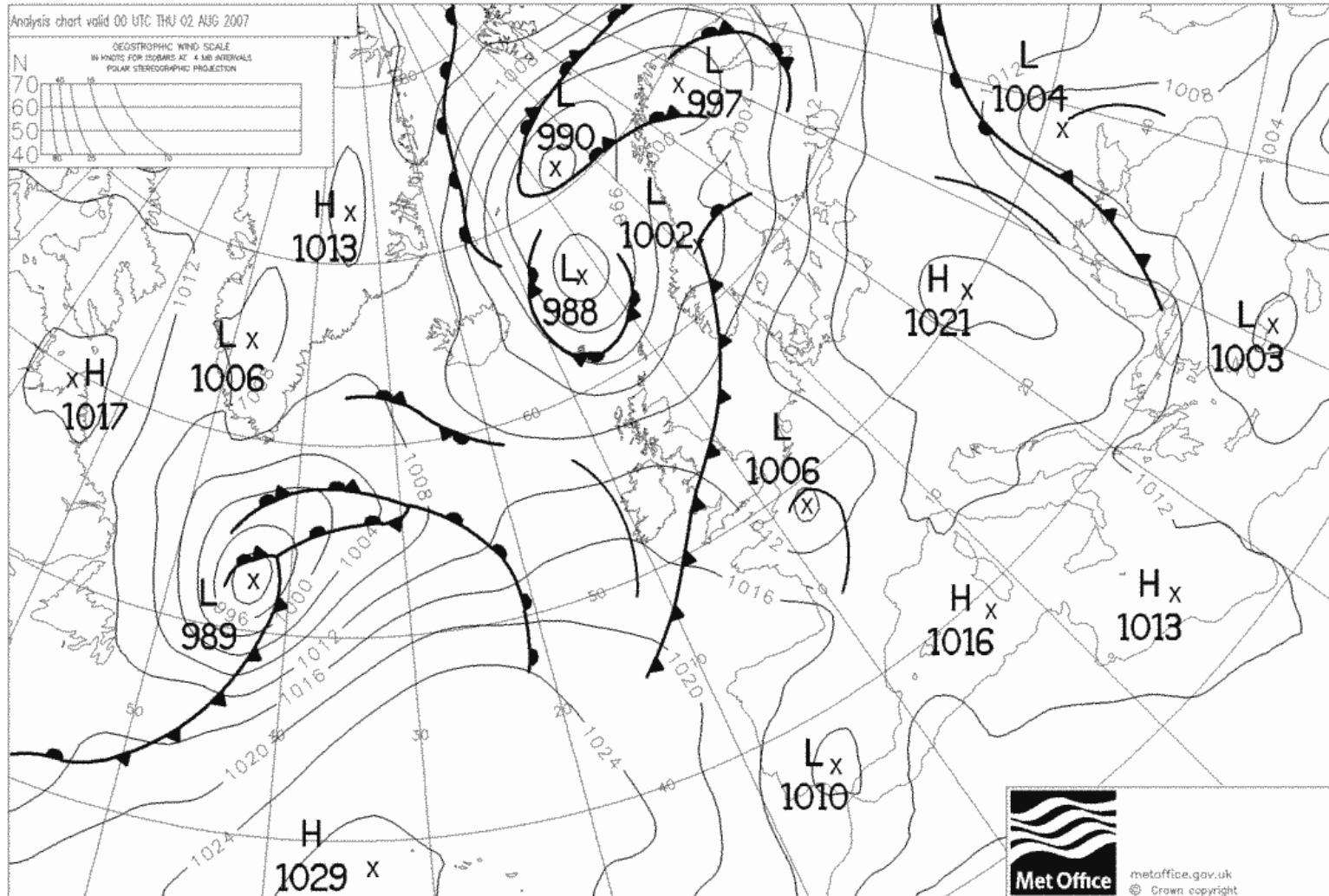
EIEH51 MSG 10.8 micron Infrared Image 02 Aug 2007 0500 UTC



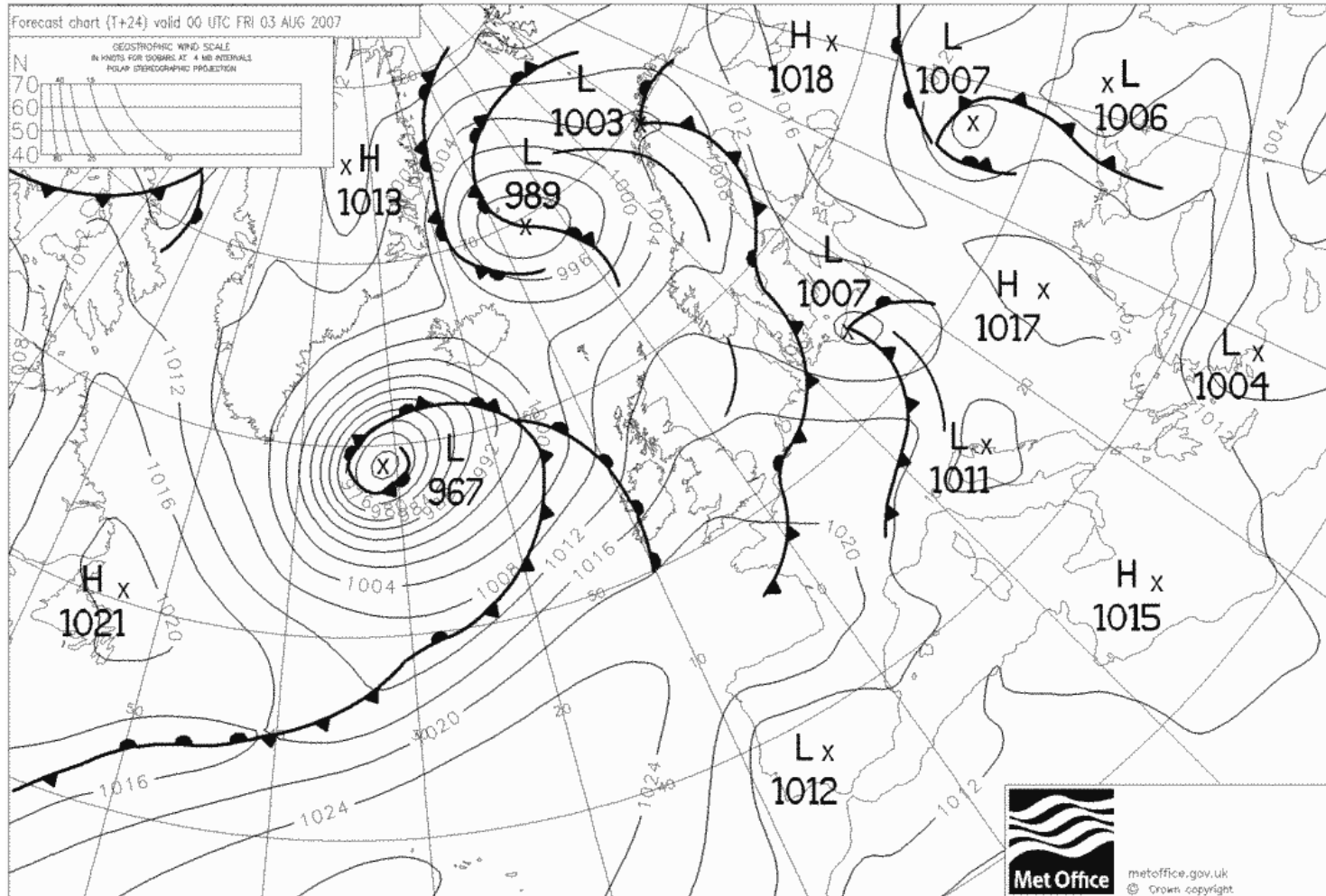
VIS 6h TU



Obs 00H TU

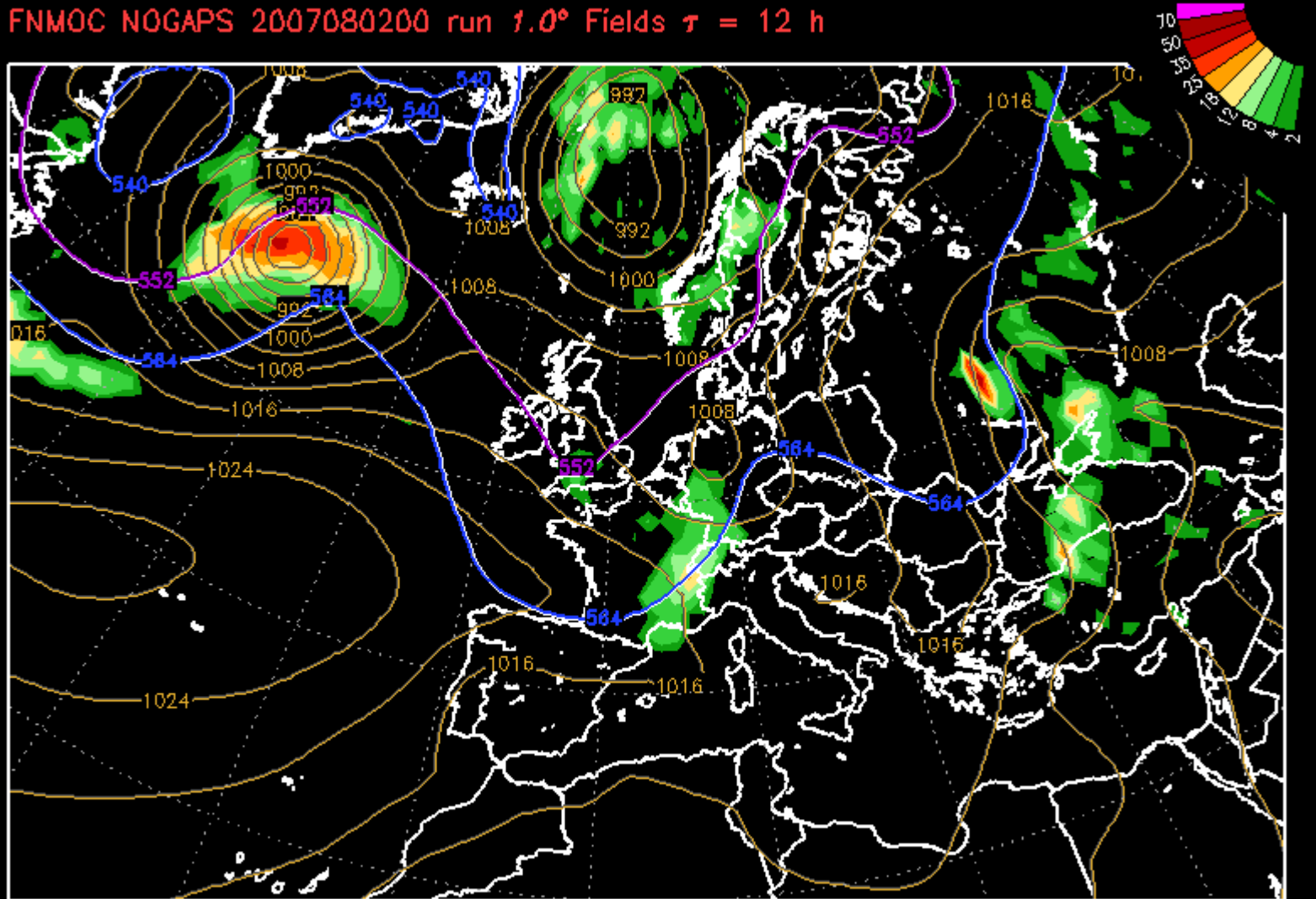


To morrow 00H TU



RAIN forecast today 12H TU

FNMOG NOGAPS 2007080200 run 1.0° Fields $\tau = 12$ h

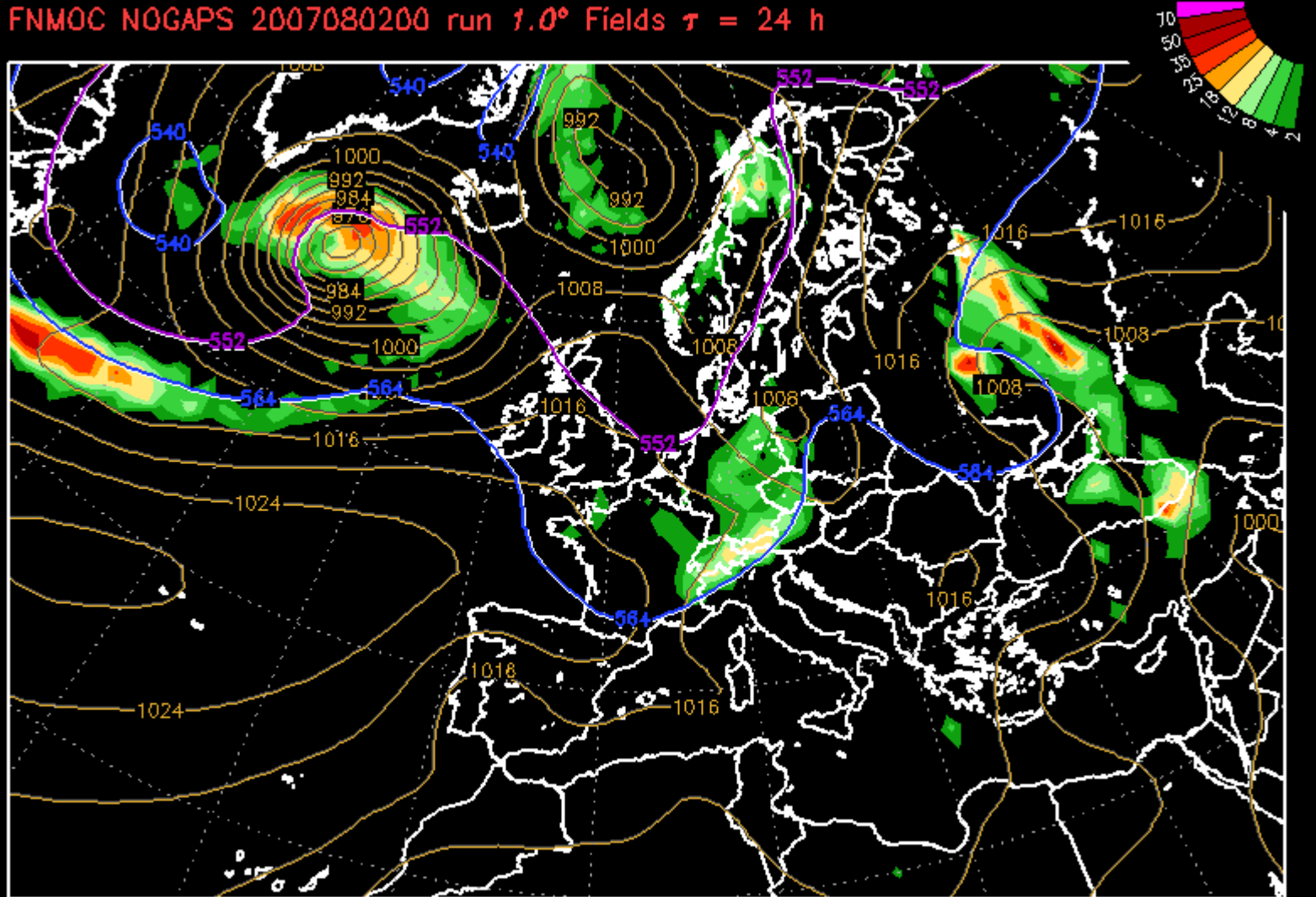


VT: Thu 12Z 02 AUG 07 SLP [hPa]/540,528 thk Line/Prev 12hr Prop Rate [mm/12hr]

NOGAPS Data Courtesy of Fleet Numerical Meteorology and Oceanography Center, Monterey, CA
GrADS (<http://grads.jgaa.org/grads>) Graphics by D.J.Lawa FNMOG (dannis.lawa@navy.mil)

RAIN Forecast tomorrow 00H TU

FNMOG NOGAPS 2007080200 run 1.0° Fields $\tau = 24$ h

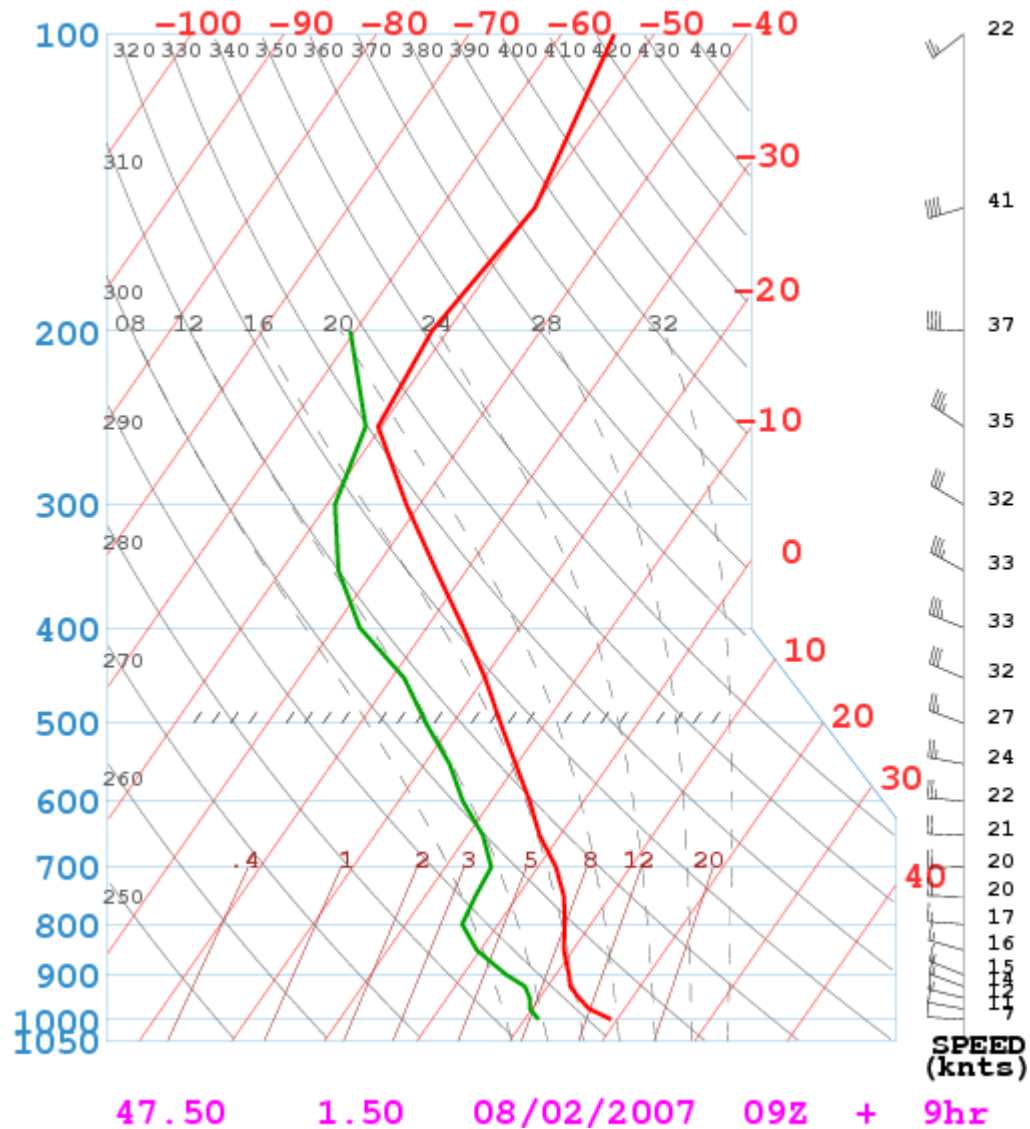


VT: Fri 00Z 03 AUG 07 SLP [hPa]/540,528 thk Line/Prev 12hr Prop Rate [mm/12hr]

NOGAPS Data Courtesy of Fleet Numerical Meteorology and Oceanography Center, Monterey, CA
GrADS (<http://grads.jgaa.org/grads>) Graphics by D.J.Lawa FNMOG (dannis.lawa@navy.mil)

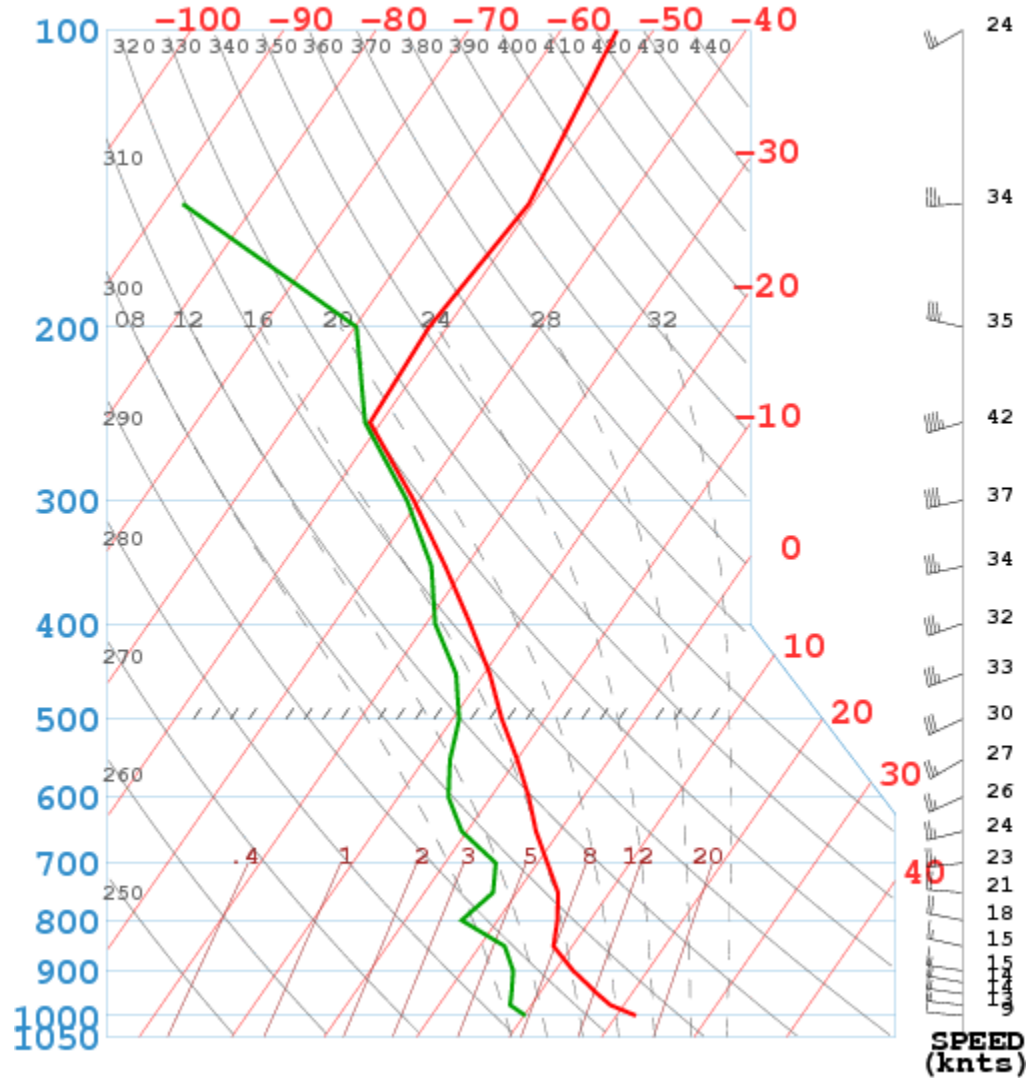
Soundings : Bailleau 9H TU

GF SFNH



Sounding : Bailleau 12H TU

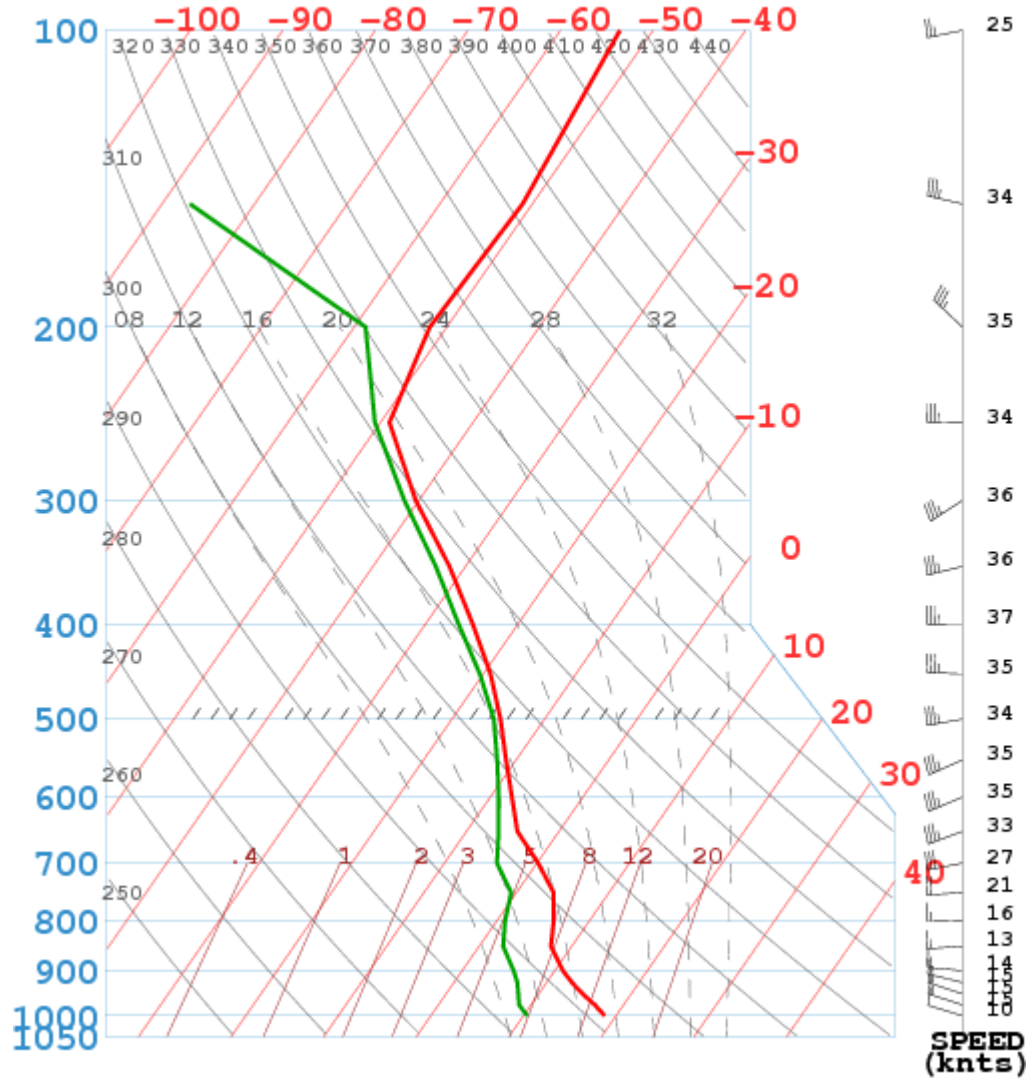
GFSENH



47.50 1.50 08/02/2007 12Z + 12hr

Sounding : Bailleau 12H TU

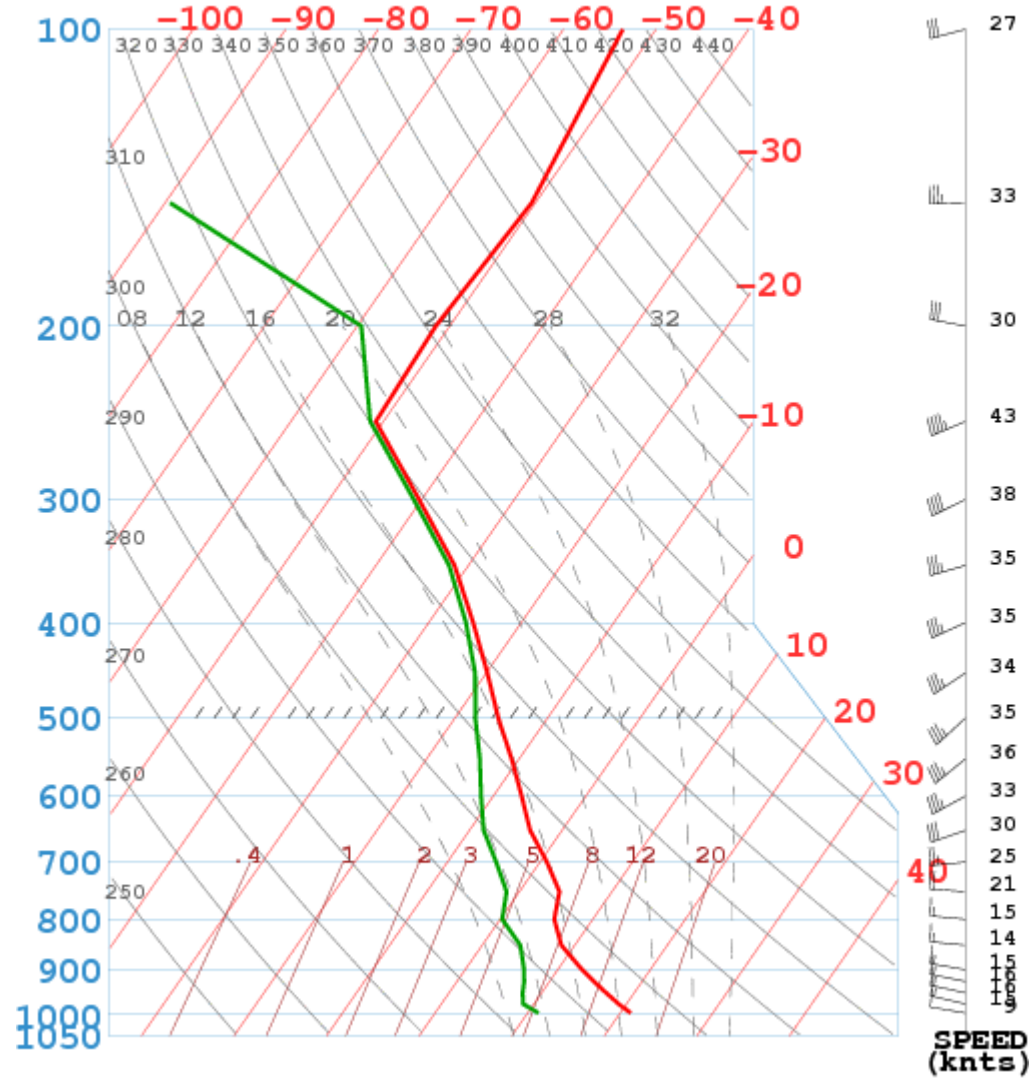
GFSFNH



47.50 1.50 08/02/2007 15Z + 15hr

Soundina : 100km SE 15H TU

GF SFNH



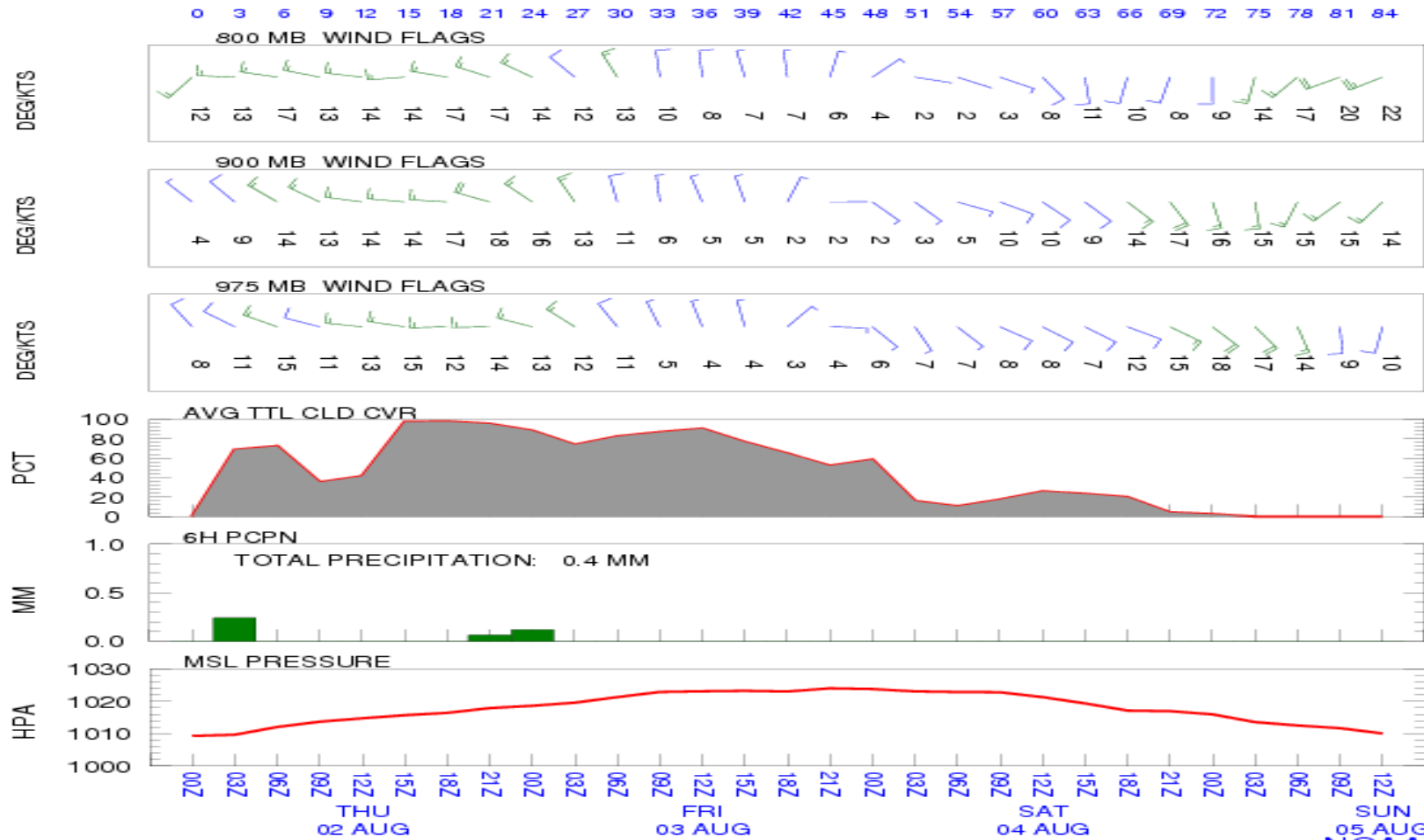
47.50 2.50 08/02/2007 15Z + 15hr

Meteogram : Bailleau

METEOROGRAM
 Latitude: 48.50 Longitude: 1.50

DATA INITIAL TIME: 02 AUG 2007 00Z
 NOAA AIR RESOURCES LABORATORY
 READY Web Server

CALCULATION STARTED AT: 02 AUG 2007 00Z
 CALCULATION ENDED AT: 05 AUG 2007 12Z



Summary

- **Today = Cloudy & uncertain**
- **Between 2 perturbations**
- **Convection- Begining: 12h-13 local**
- **Take off + 15mn :800m 2-4 /8 cu 800m 1m/s; max 2m/s + 2/8 thin cirrus**
- **Afternoon: 24° C 1100m ; max 1m/s; 2-4/8 cu + 8/8 thick cirrus**
- **Arrivals: 1000m; 1m/s; 1/8 cu + High clouds 8/8: thick (sky completely covered by Cirrus & Ac)**
- **Some drops of rain possible**
- **End of convection : 17h00 local (50% Vza) (sky completely covered by Cirrus & Ac)**
- **QNH:1015 Hpa**
- **Wind ground 1000m 1500m 2000m**
- **Take off 280/ 10 280/ 15 290/20**
- **Arrivals 290/ 10 290 / 15 300/ 15**

TOP THERM