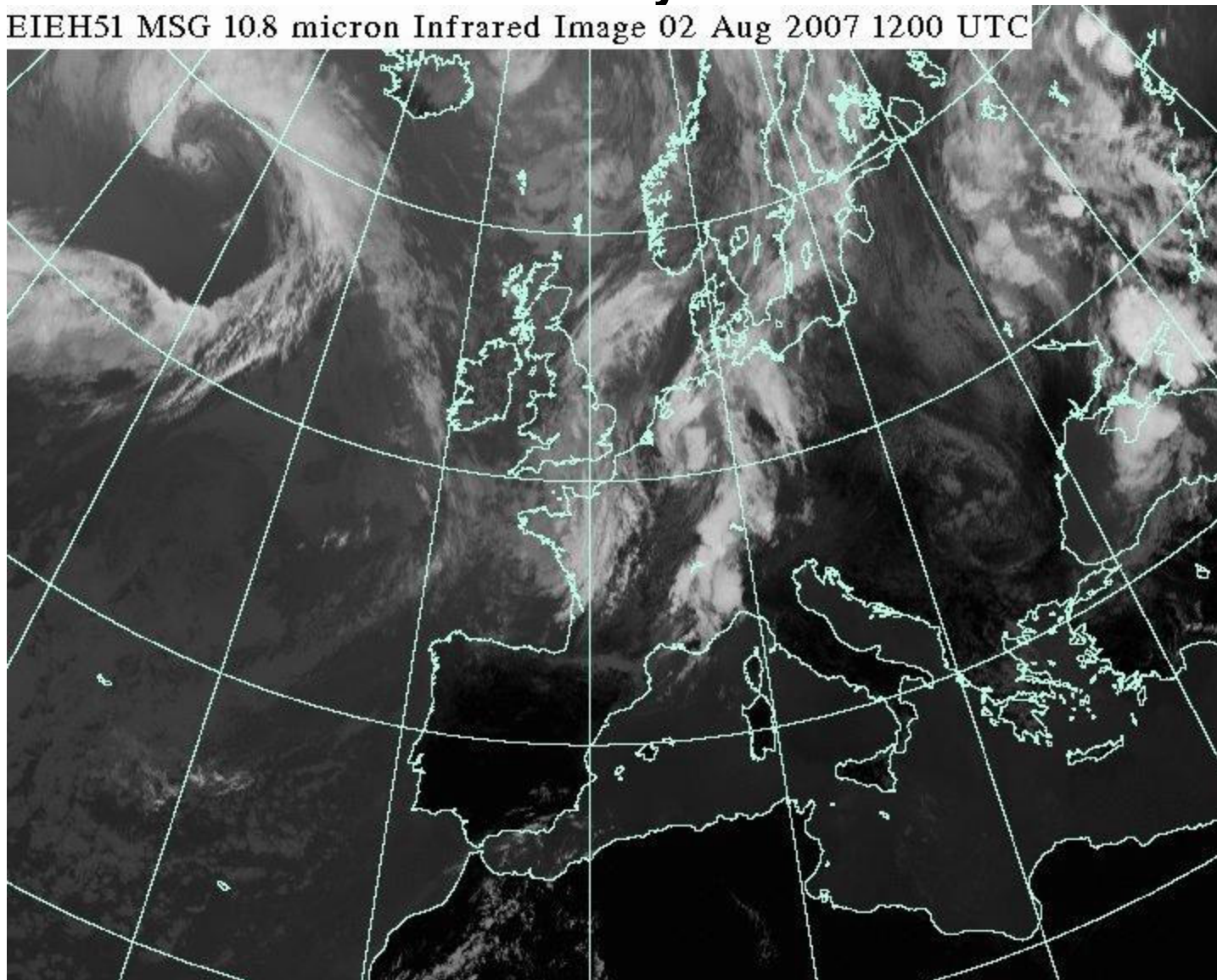


International Bailleau 2007

August 3 rd

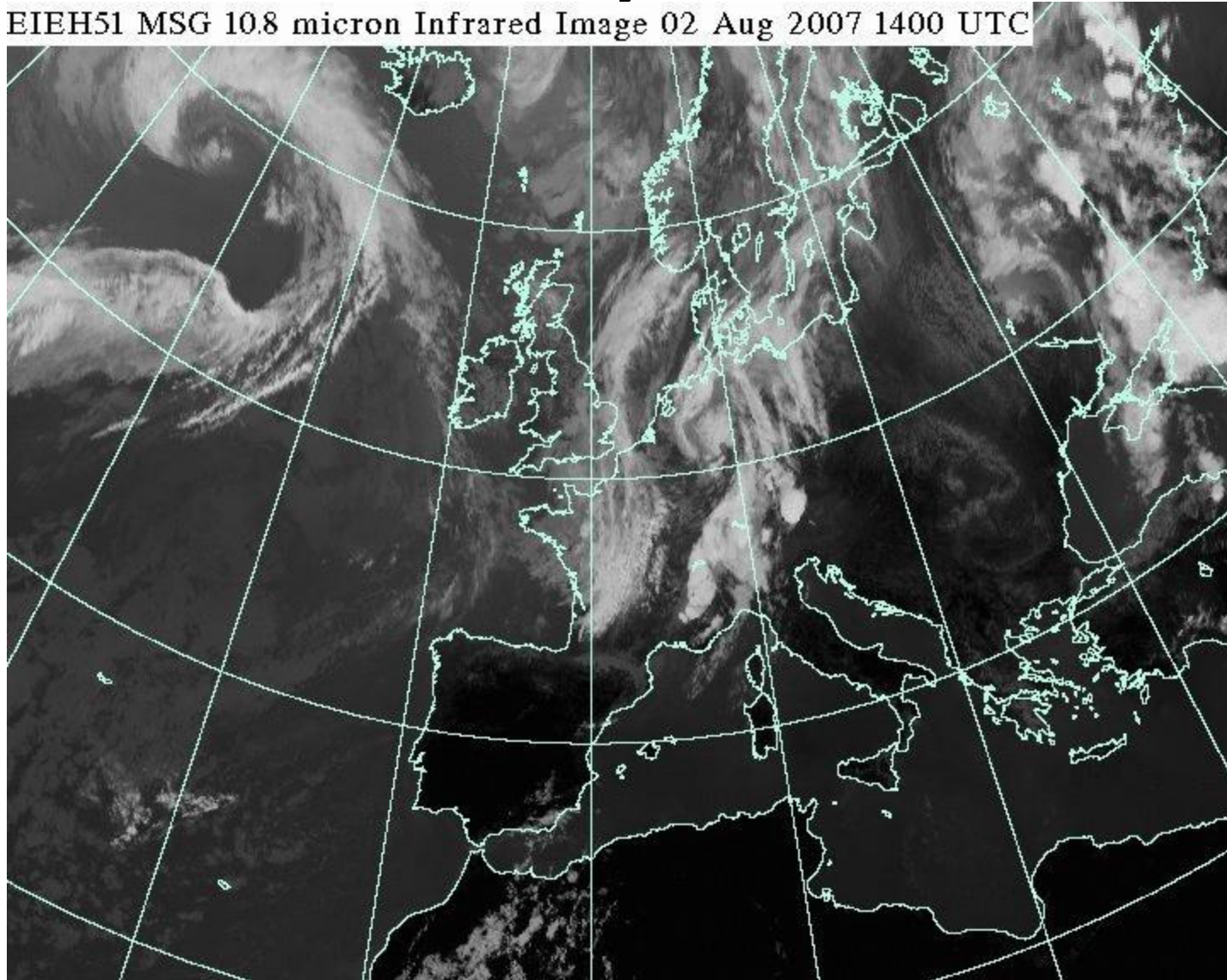
Yesterday start

EIEH51 MSG 10.8 micron Infrared Image 02 Aug 2007 1200 UTC



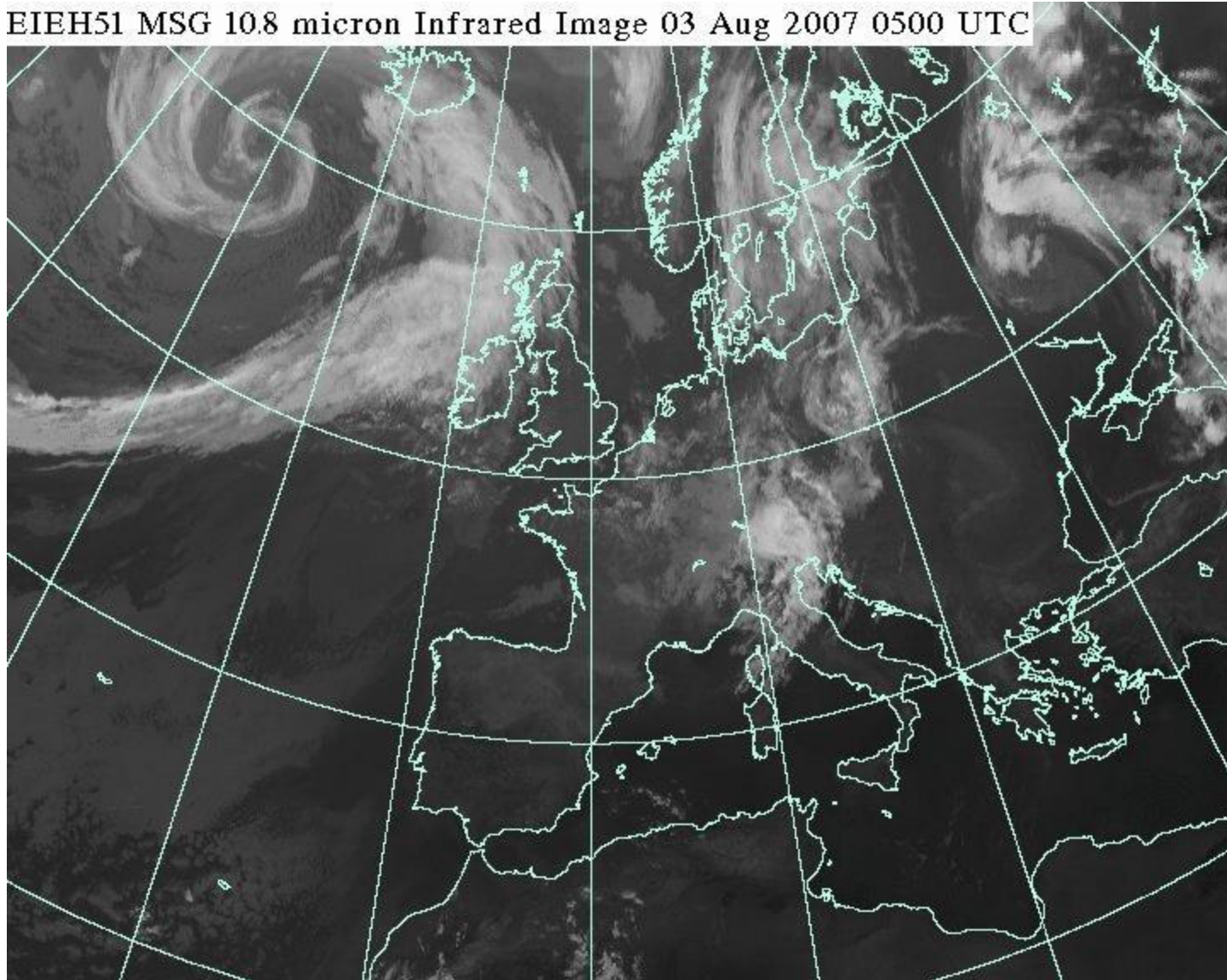
Yesterday arrivals

EIEH51 MSG 10.8 micron Infrared Image 02 Aug 2007 1400 UTC

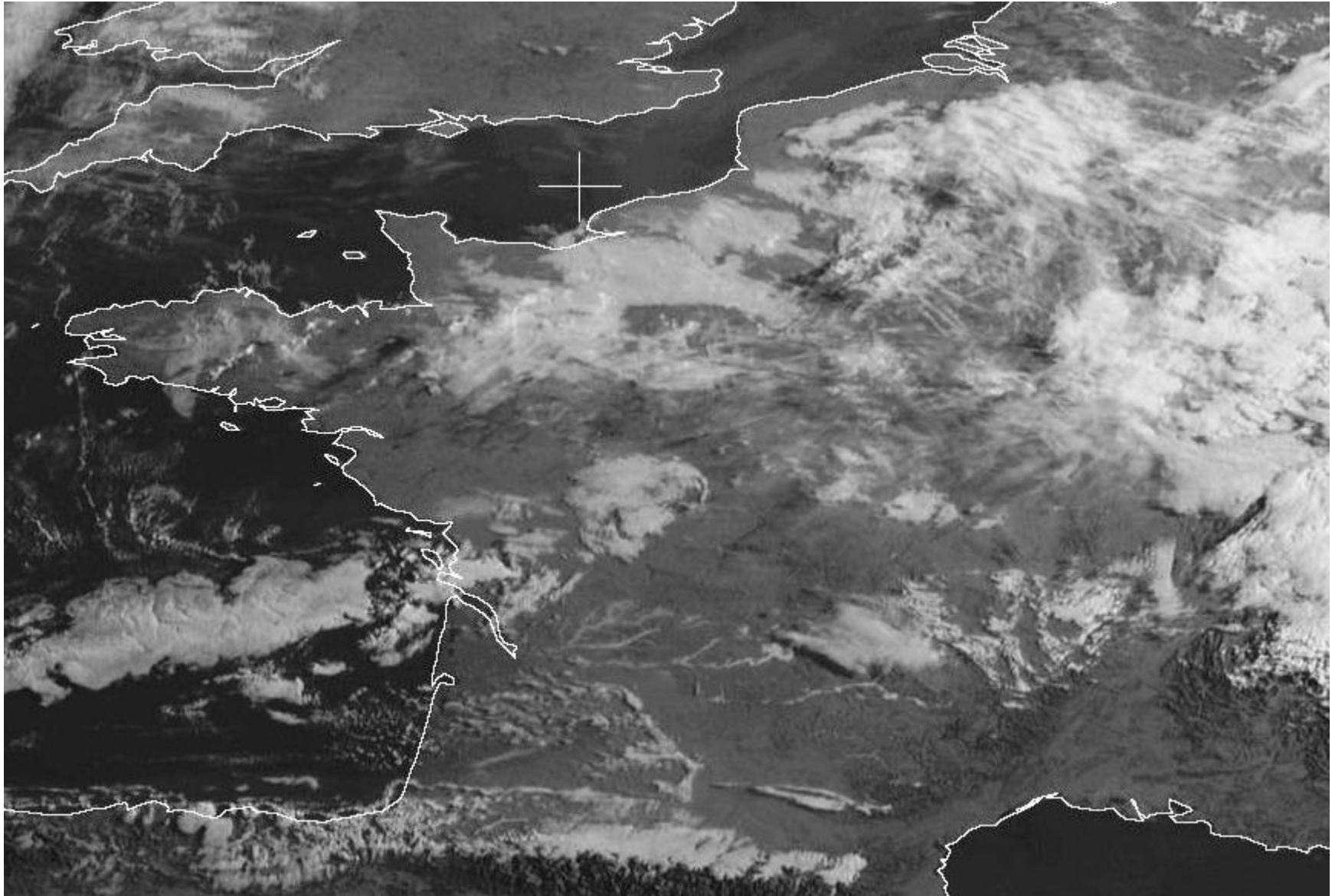


IR 5h TU

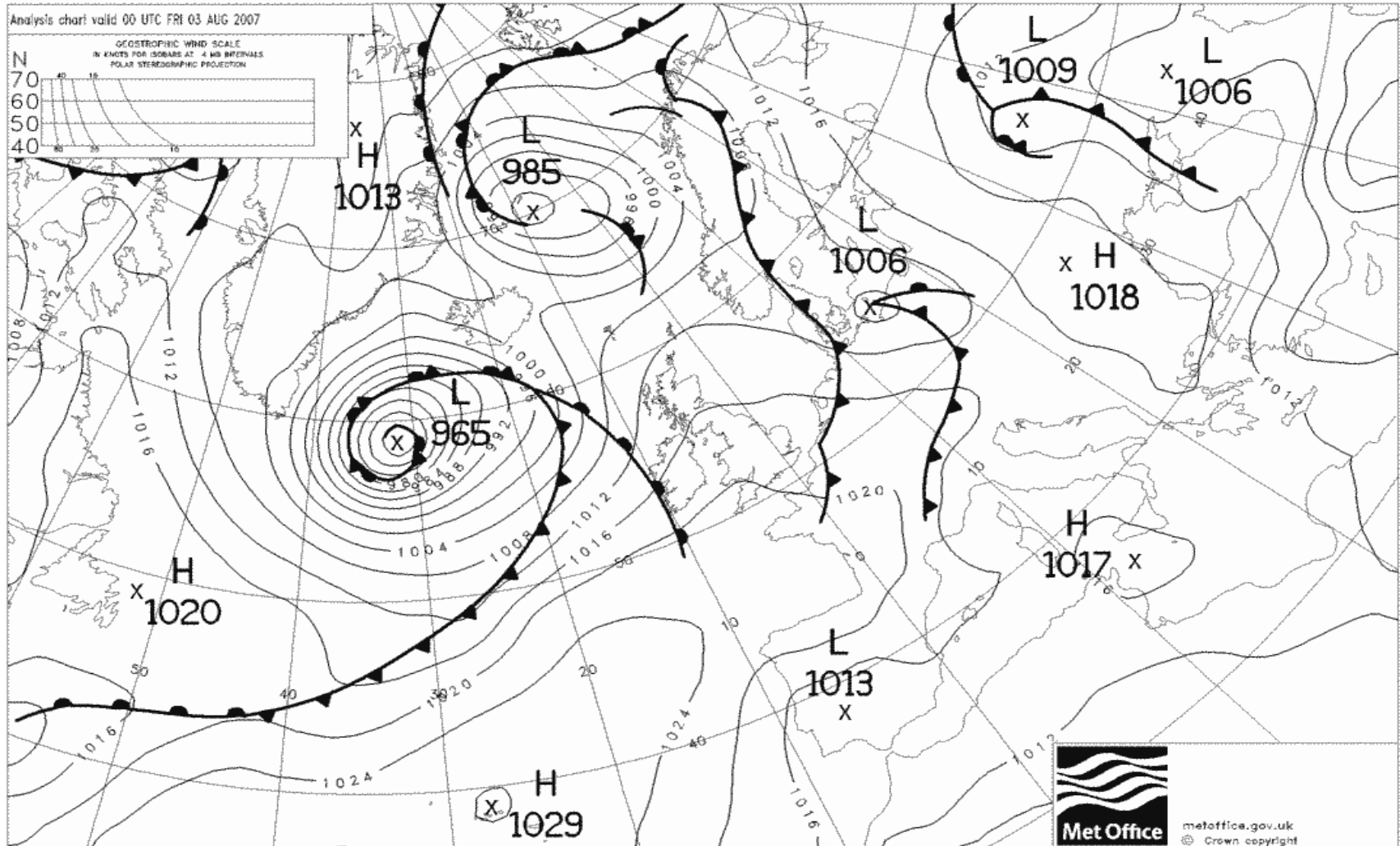
EIEH51 MSG 10.8 micron Infrared Image 03 Aug 2007 0500 UTC



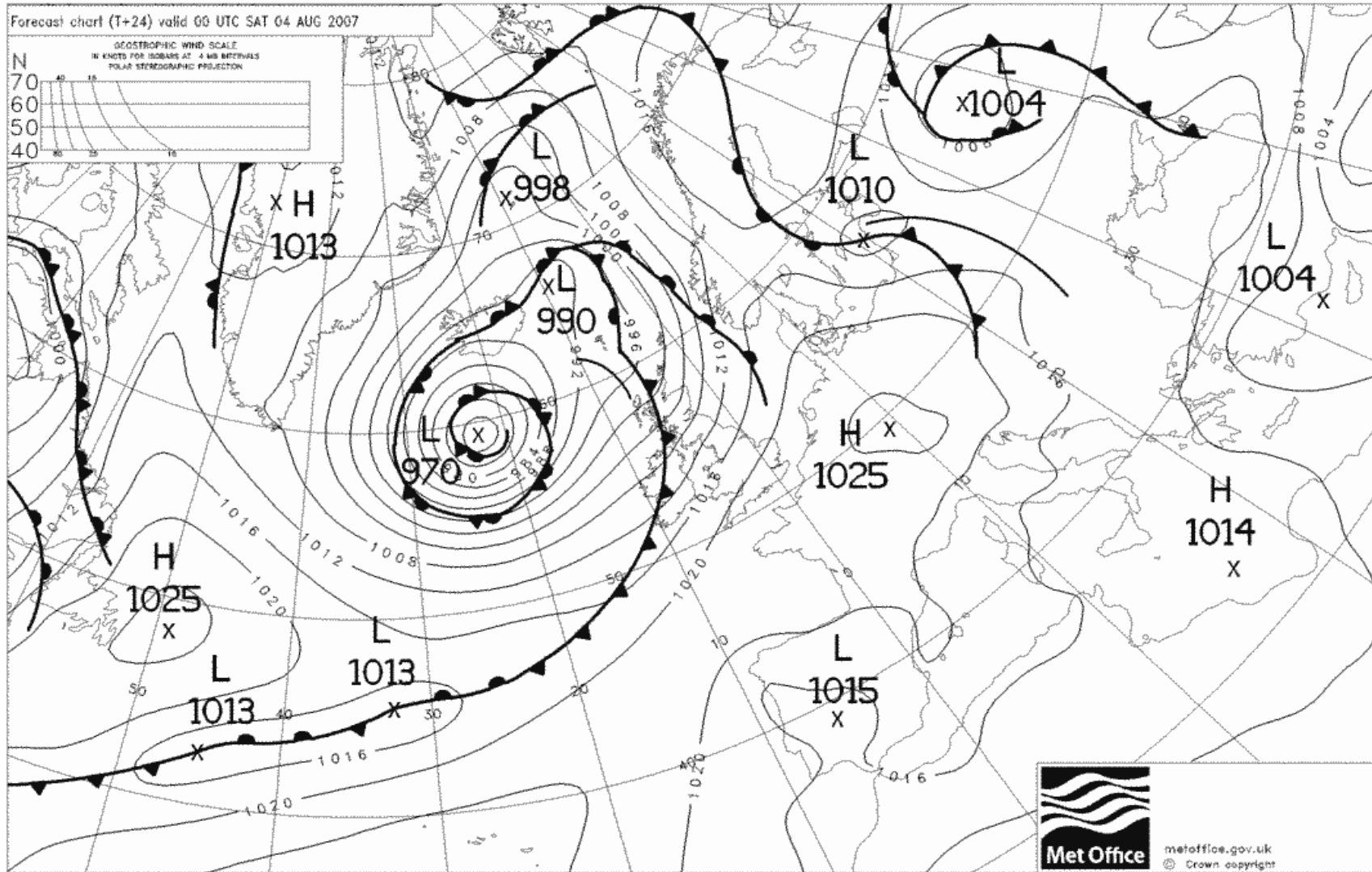
VIS 6h TU



Obs 00H TU

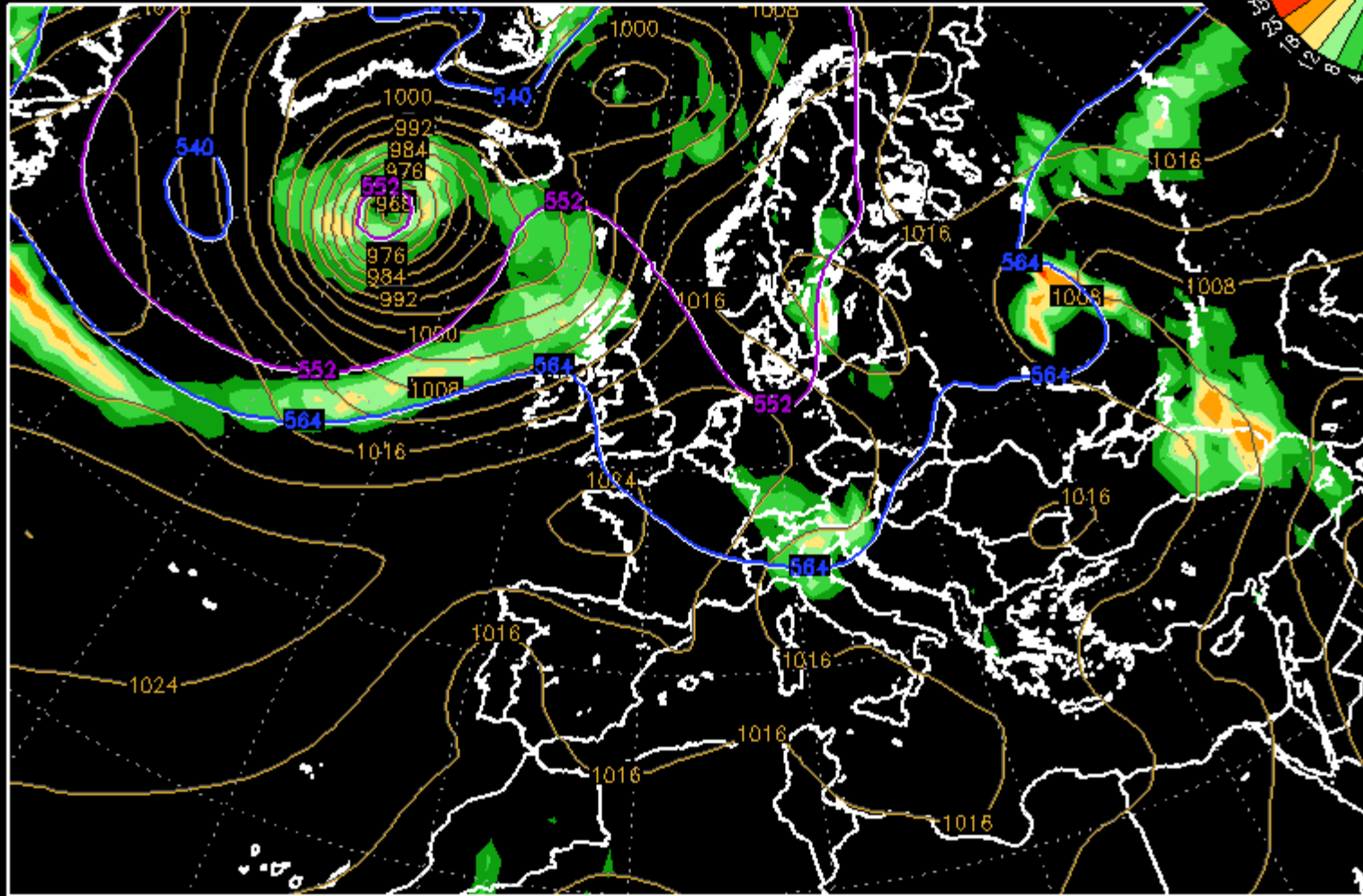


To morrow 00H TU



RAIN forecast today 12H TU

FNMOG NOGAPS 2007080300 run 1.0° Fields $\tau = 12$ h

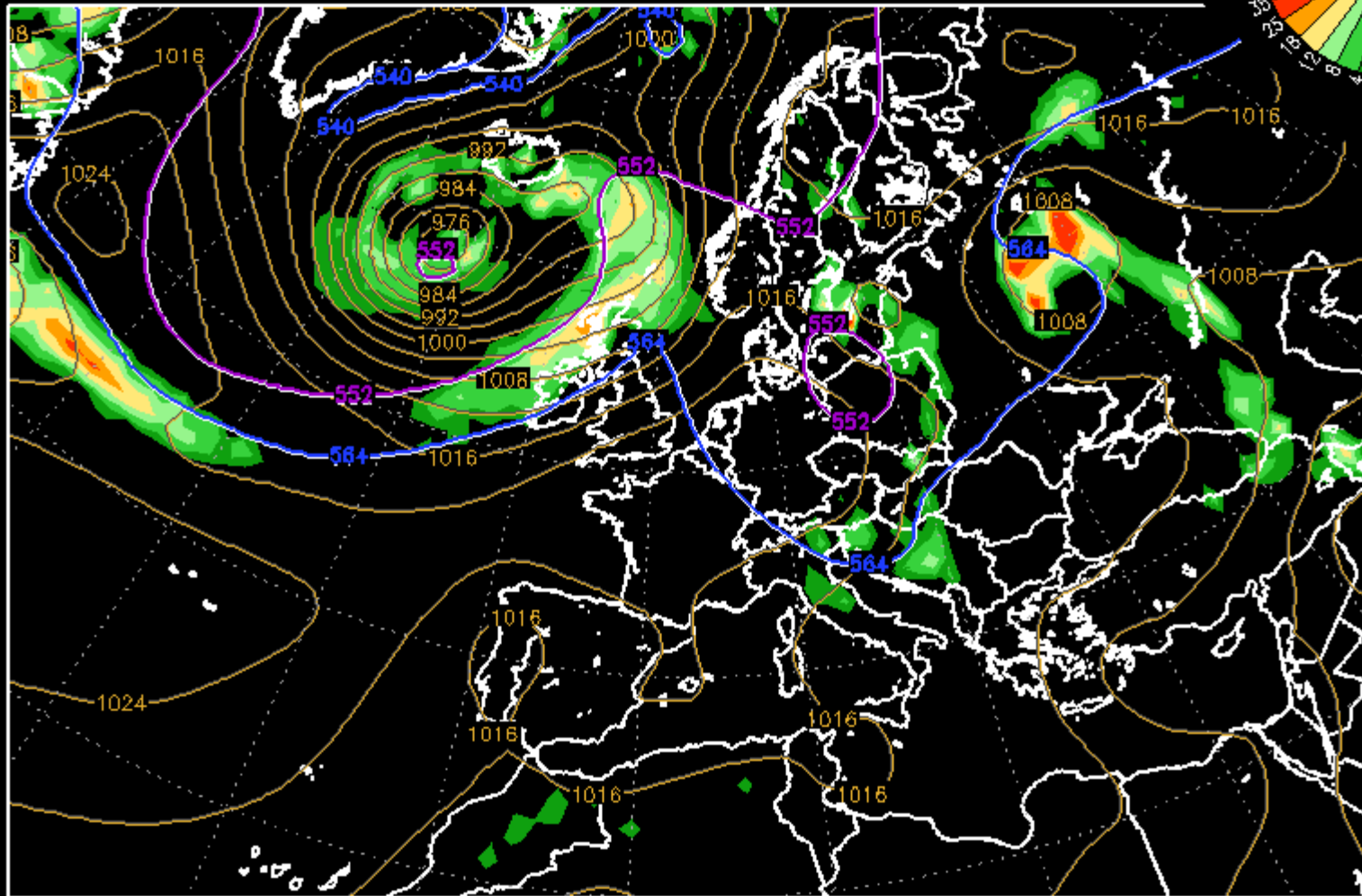


VT: Fri 12Z 03 AUG 07 SLP [hPa]/540,528 thk Line/Prev 12hr Prcp Rate [mm/12hr]

NOGAPS Data Courtesy of Fleet Numerical Meteorology and Oceanography Center, Monterey, CA
GrADS (<http://grads.igpp.org/grads>) Graphics by D.J.Lawa FNMOG (dannis.lawa@navy.mil)

RAIN Forecast tomorrow 00H TUJ

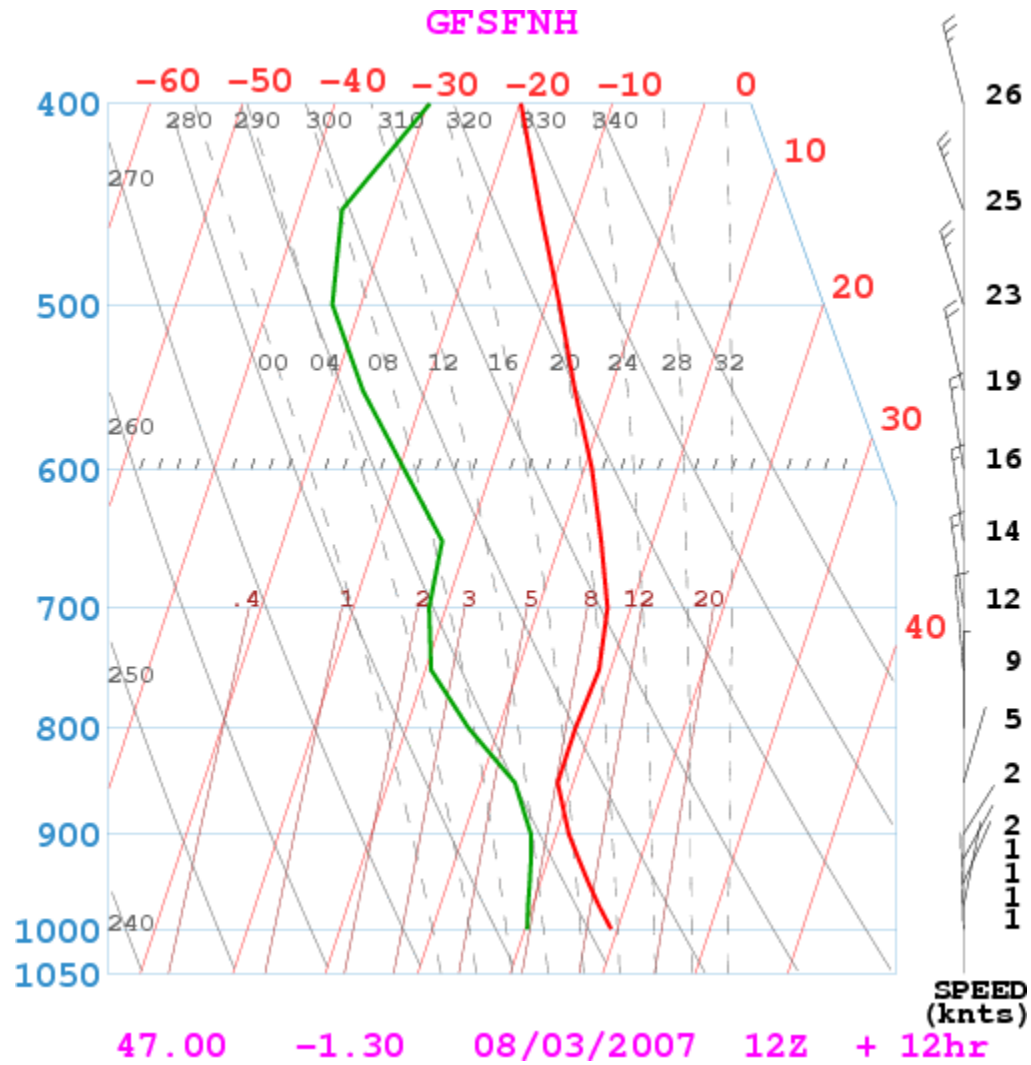
FNMOG NOGAPS 2007080300 run 1.0° Fields $\tau = 24$ h



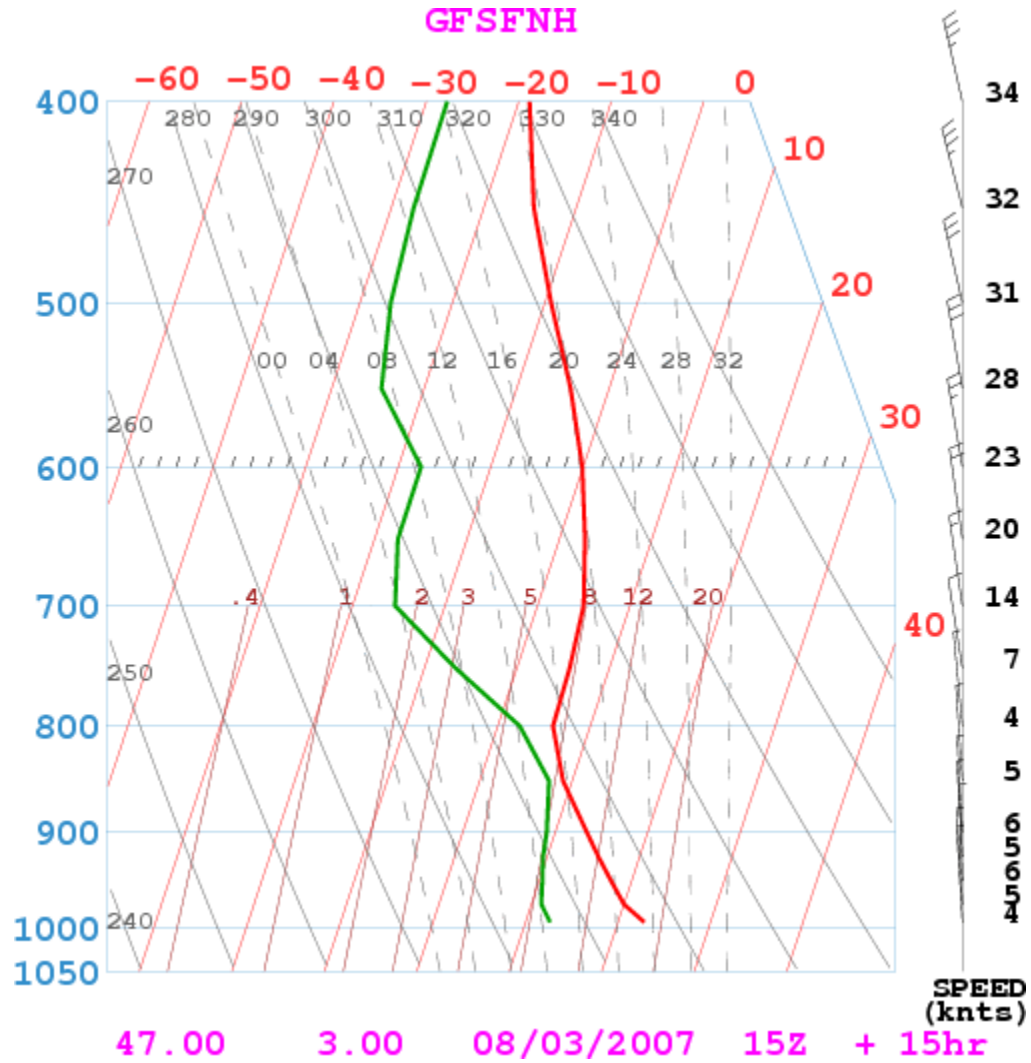
VT: Sat 00Z 04 AUG 07 SLP [hPa]/540,528 thk Line/Prev 12hr Prcp Rate [mm/12hr]

NOGAPS Data Courtesy of Fleet Numerical Meteorology and Oceanography Center, Monterey, CA
GrADS (<http://grads.igpp.org/grads>) Graphics by D.J.Lawa FNMOG (dannis.lawa@navy.mil)

Sounding : Montaigu 12 TU



Sounding : Nevers 15 TU

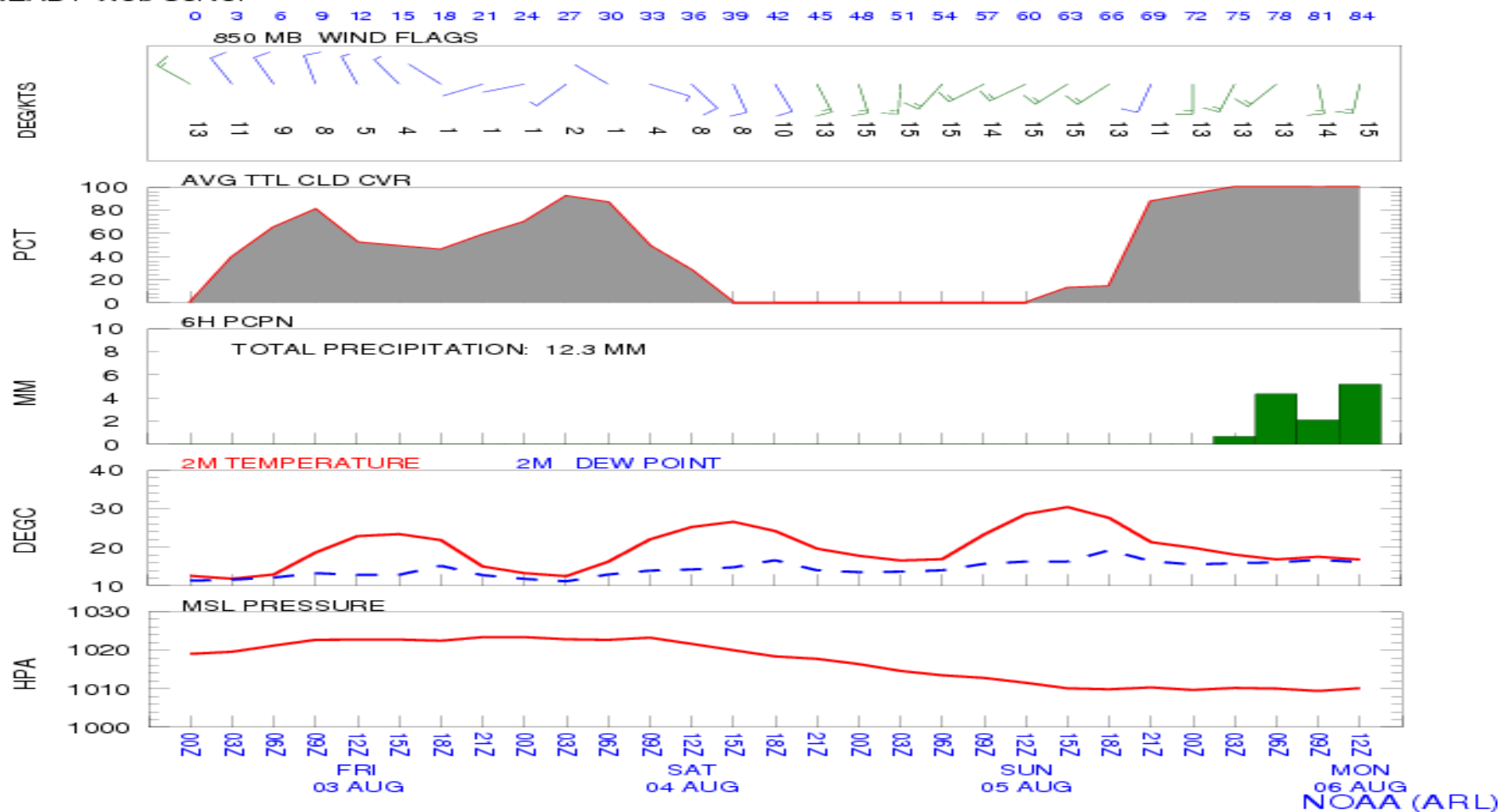


Meteogram : Bailleau

METEOROGRAM
 Latitude: 48.50 Longitude: 1.50

DATA INITIAL TIME: 03 AUG 2007 00Z
 NOAA AIR RESOURCES LABORATORY
 READY Web Server

CALCULATION STARTED AT: 03 AUG 2007 00Z
 CALCULATION ENDED AT: 06 AUG 2007 12Z



Summary

- **Today = Good**
- **Convection- Beginning : 10h30-11h30 local (low bases)**
- **Take off + 15mn :800m 2-4 /8 cu 1m/s; max 2m/s + locally 4/8 SC**
- **Afternoon: 24° C 1500m ; 2m/s max 3m/s; 1-4 /8 cu +**
- **Arrivals: 1600m; 2m/s; 0- 2/8 cu**
- **NO wind or very weak coming from N**
- **End of convection : 18h30 local (50% Vza); However convection will last until 20h local (1-2m/s)**
- **QNH:1023 Hpa**
- | Wind | ground | 1000m | 1500m | 2000m |
|-----------------|---------------|----------------|----------------|---------------|
| Take off | 010/ 5 | 010/ 5 | 010/ 5 | 010/ 5 |
| Arrivals | 360/ 1 | 360 / 2 | 360 / 5 | 340/ 8 |

TOP THERM