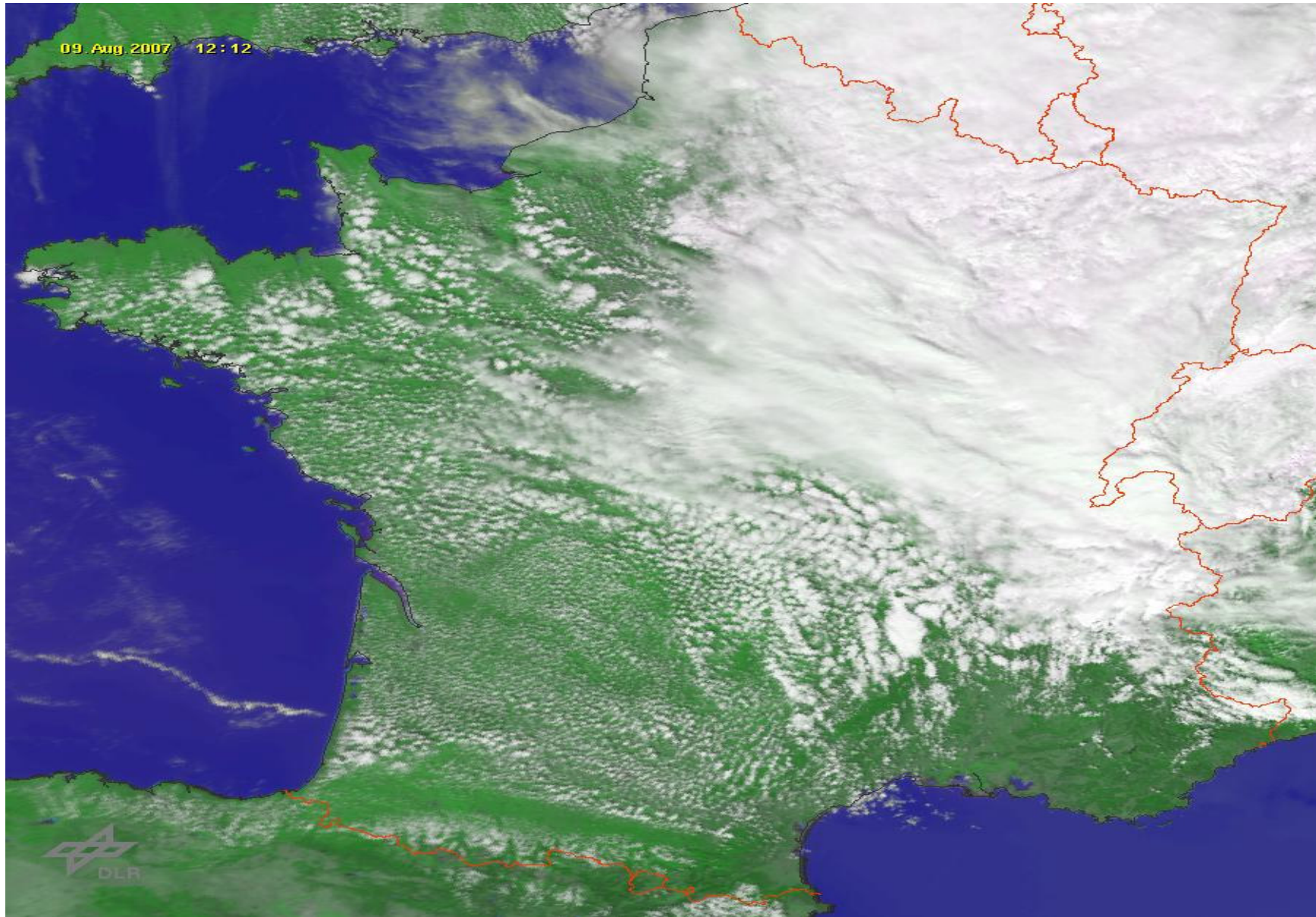
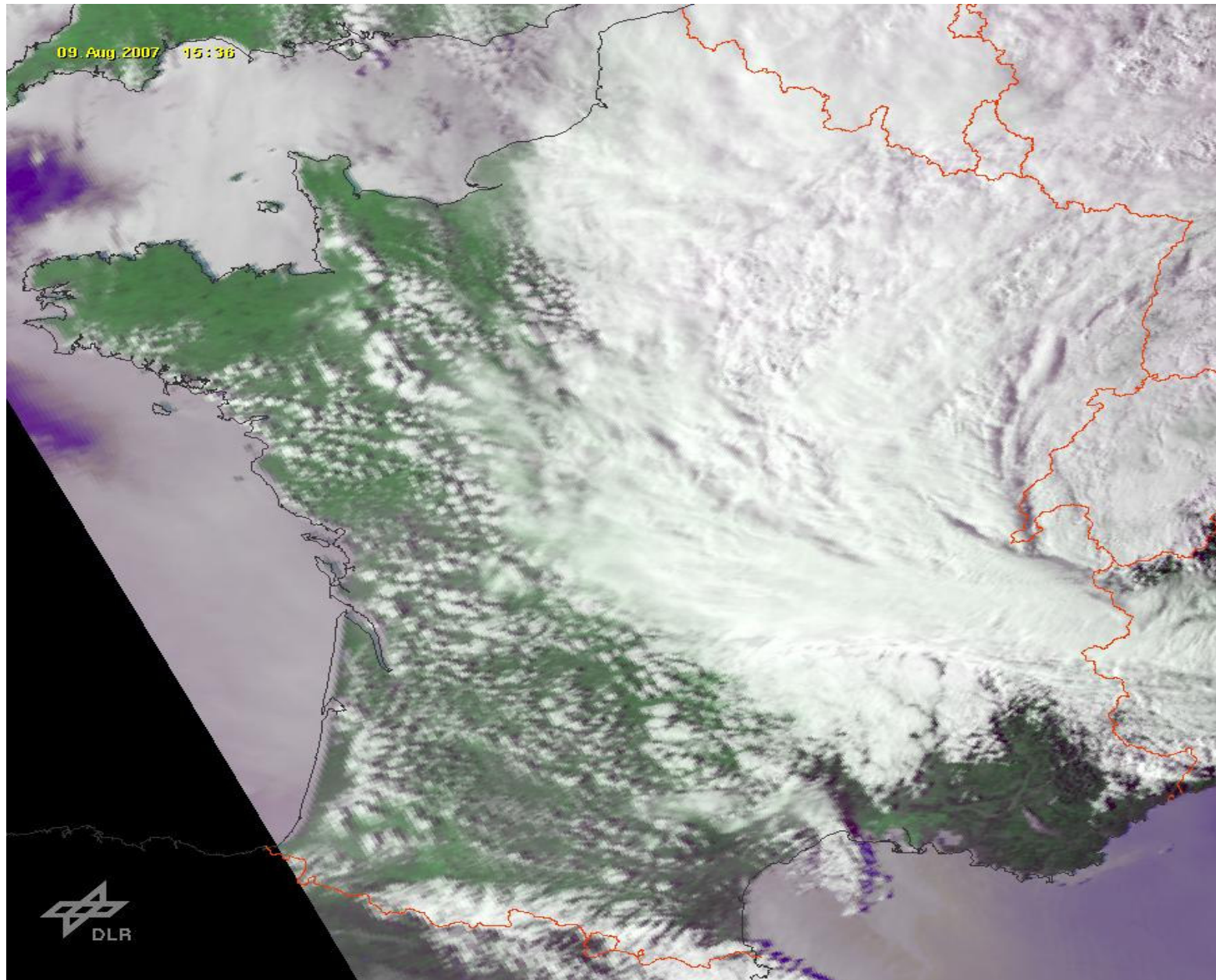


International Bailleau 2007
August 10th

Hier 14H30 local Visible

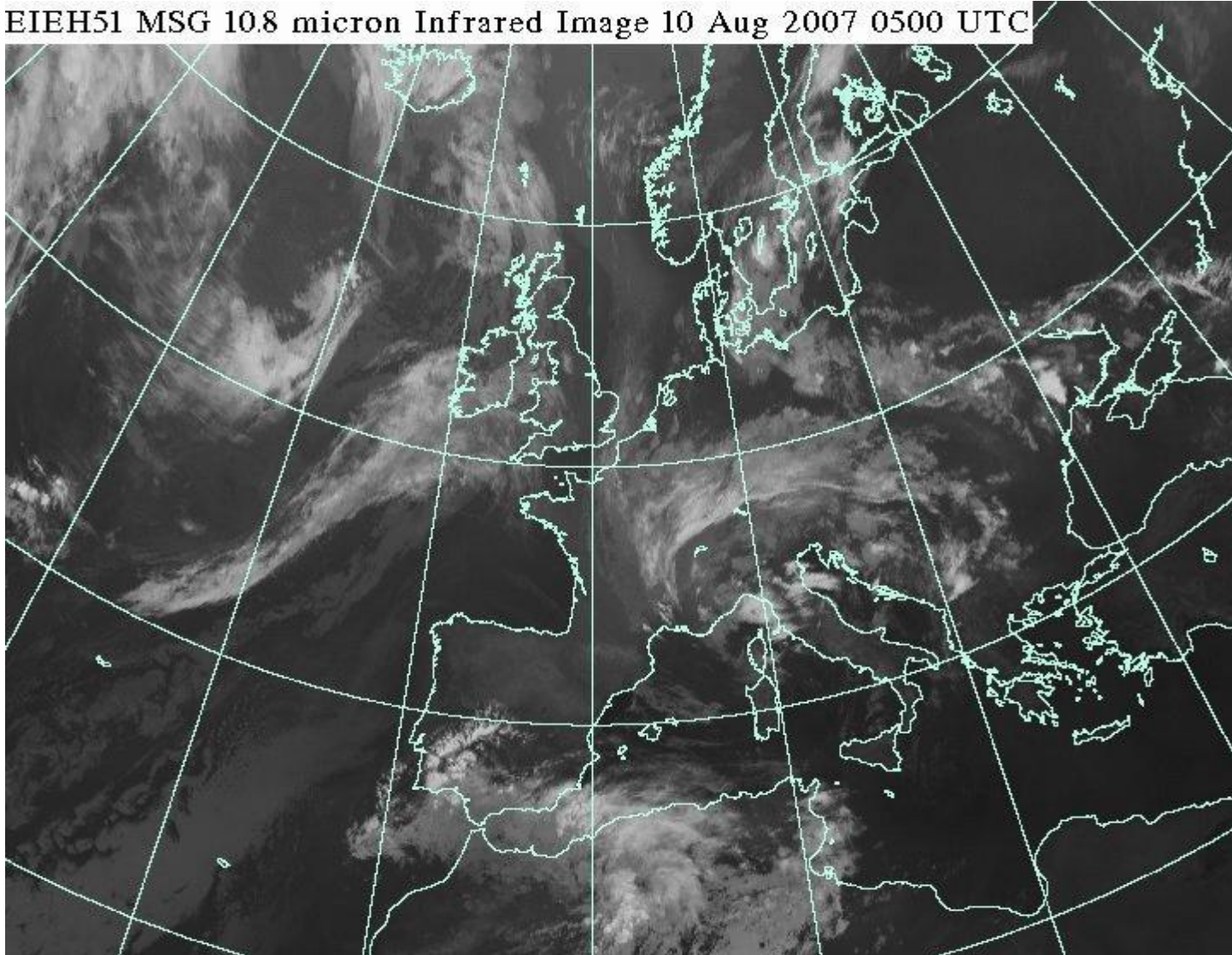


Hier 18H local Visible

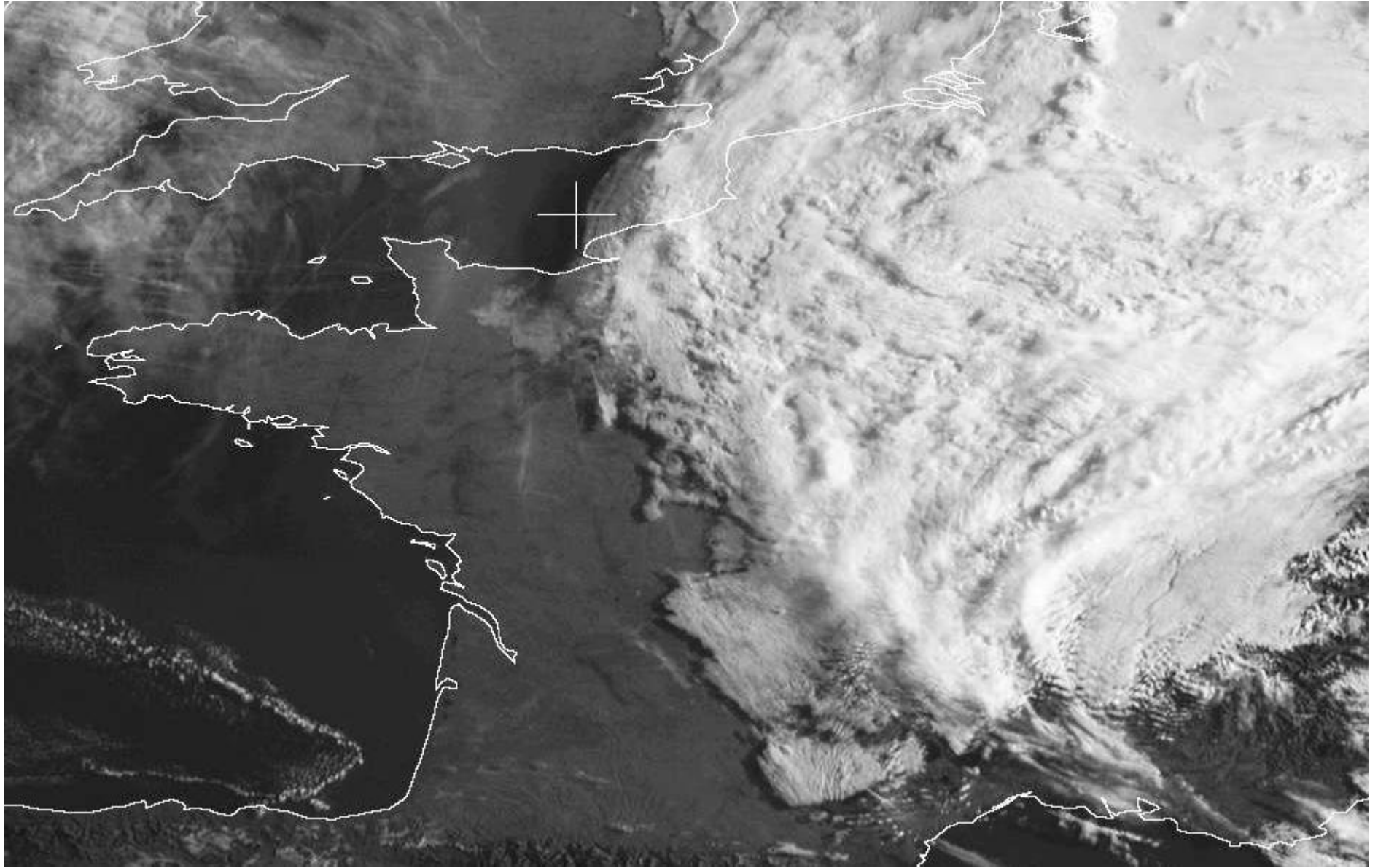


IR 5h TU

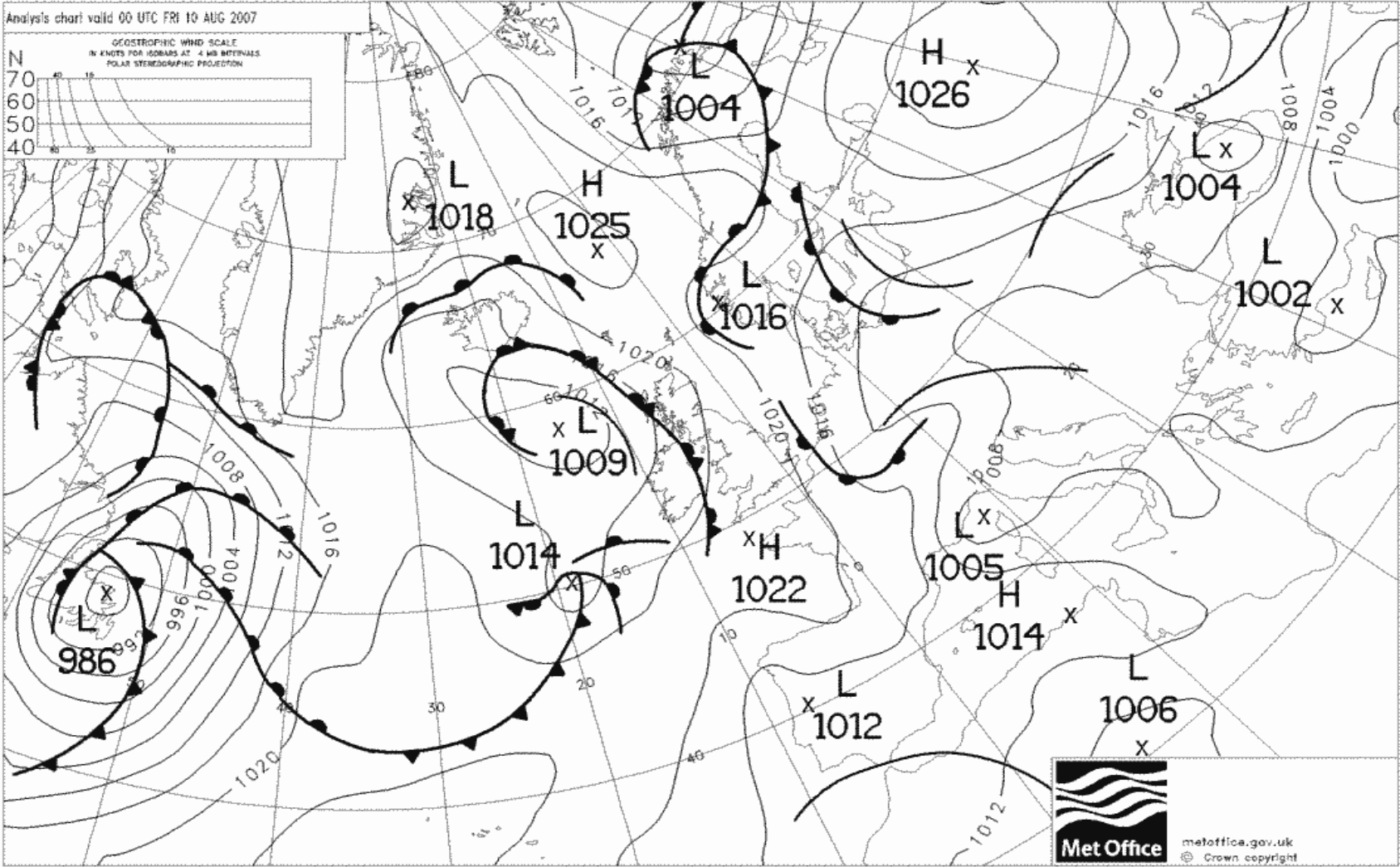
EIEH51 MSG 10.8 micron Infrared Image 10 Aug 2007 0500 UTC



VIS 6h TU

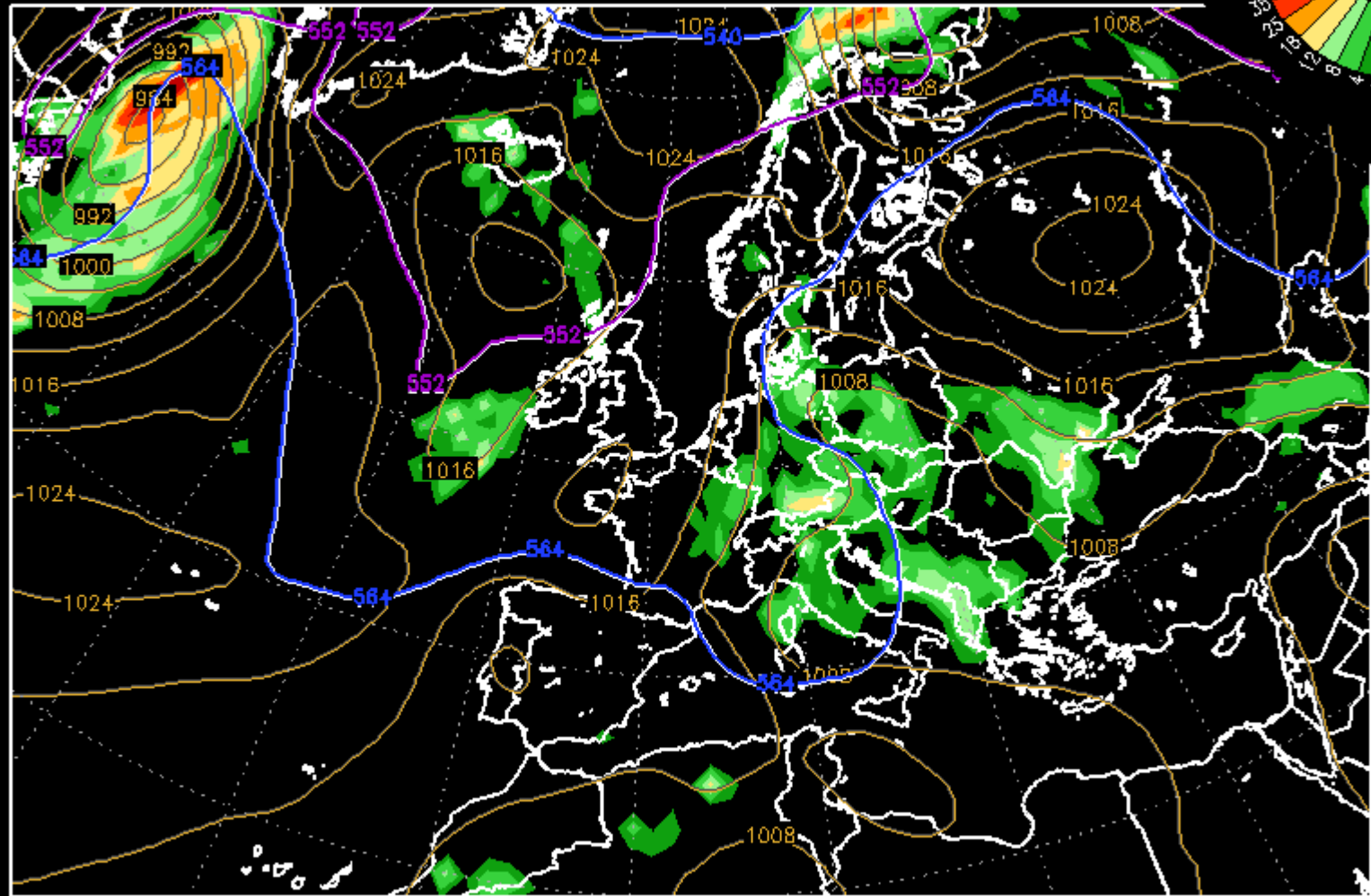


Obs 00H TU



Prévision pluie aujourd'hui 12H TU

FNMOC NOGAPS 2007081000 run 1.0° Fields $\tau = 12$ h

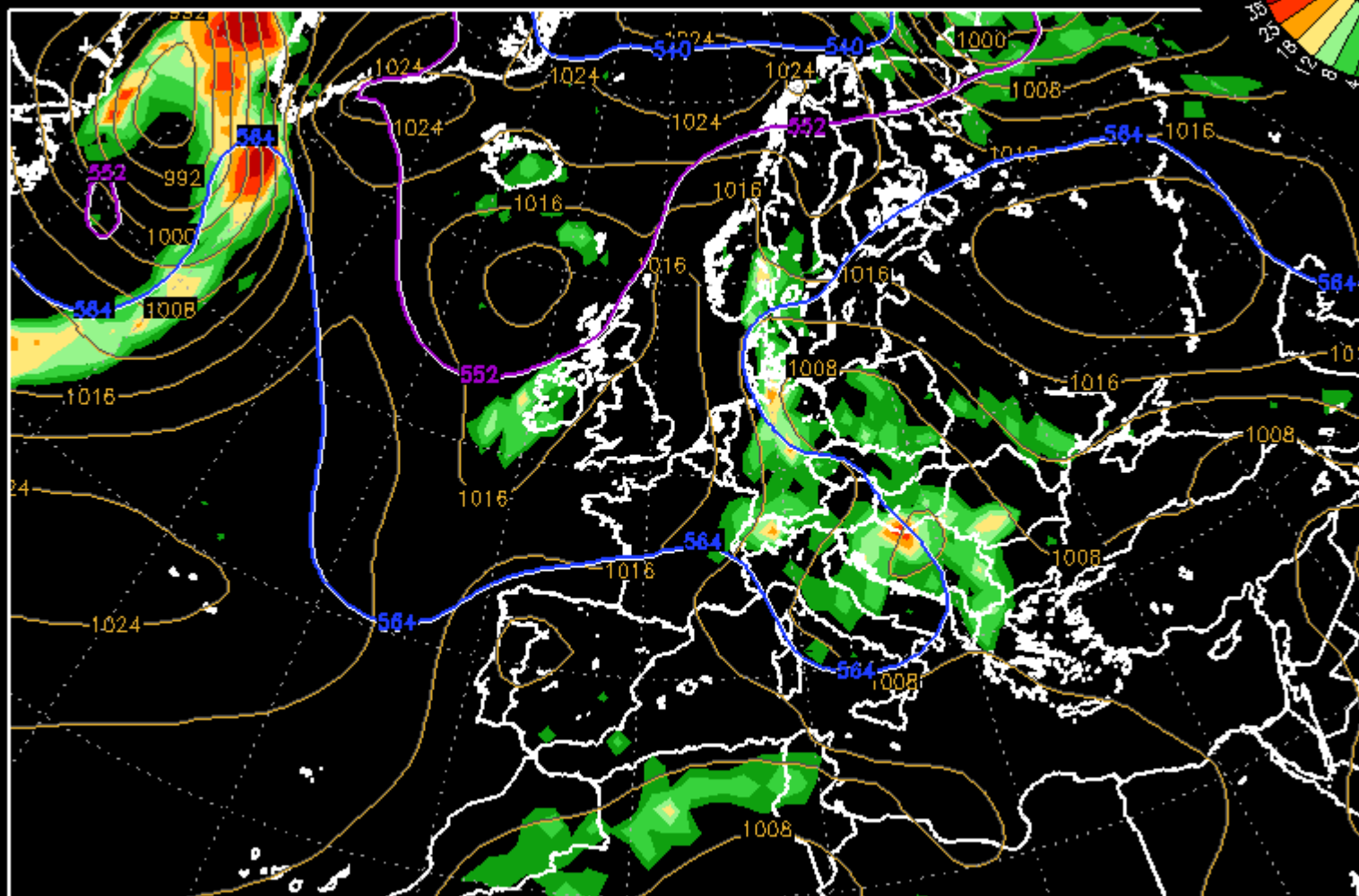


VT: Fri 12Z 10 AUG 07 SLP [hPa]/540,528 thk Line/Prev 12hr Prcp Rate [mm/12hr]

NOGAPS Data Courtesy of Fleet Numerical Meteorology and Oceanography Center, Monterey, CA
GrADS (<http://grads.igaa.org/grads>) Graphics by D.J.Lawa FNMOC (dannis.lawa@navy.mil)

Prévision pluie prochaine nuit 00H TU

FNMOC NOGAPS 2007081000 run 1.0° Fields $\tau = 24$ h



VT: Sat 00Z 11 AUG 07 SLP [hPa]/540,528 thk Line/Prev 12hr Prop Rate [mm/12hr]

NOGAPS Data Courtesy of Fleet Numerical Meteorology and Oceanography Center, Monterey, CA
GrADS (<http://grads.jgaa.org/grads>) Graphics by D.J.Lawa FNMOC (dannis.lawa@navy.mil)

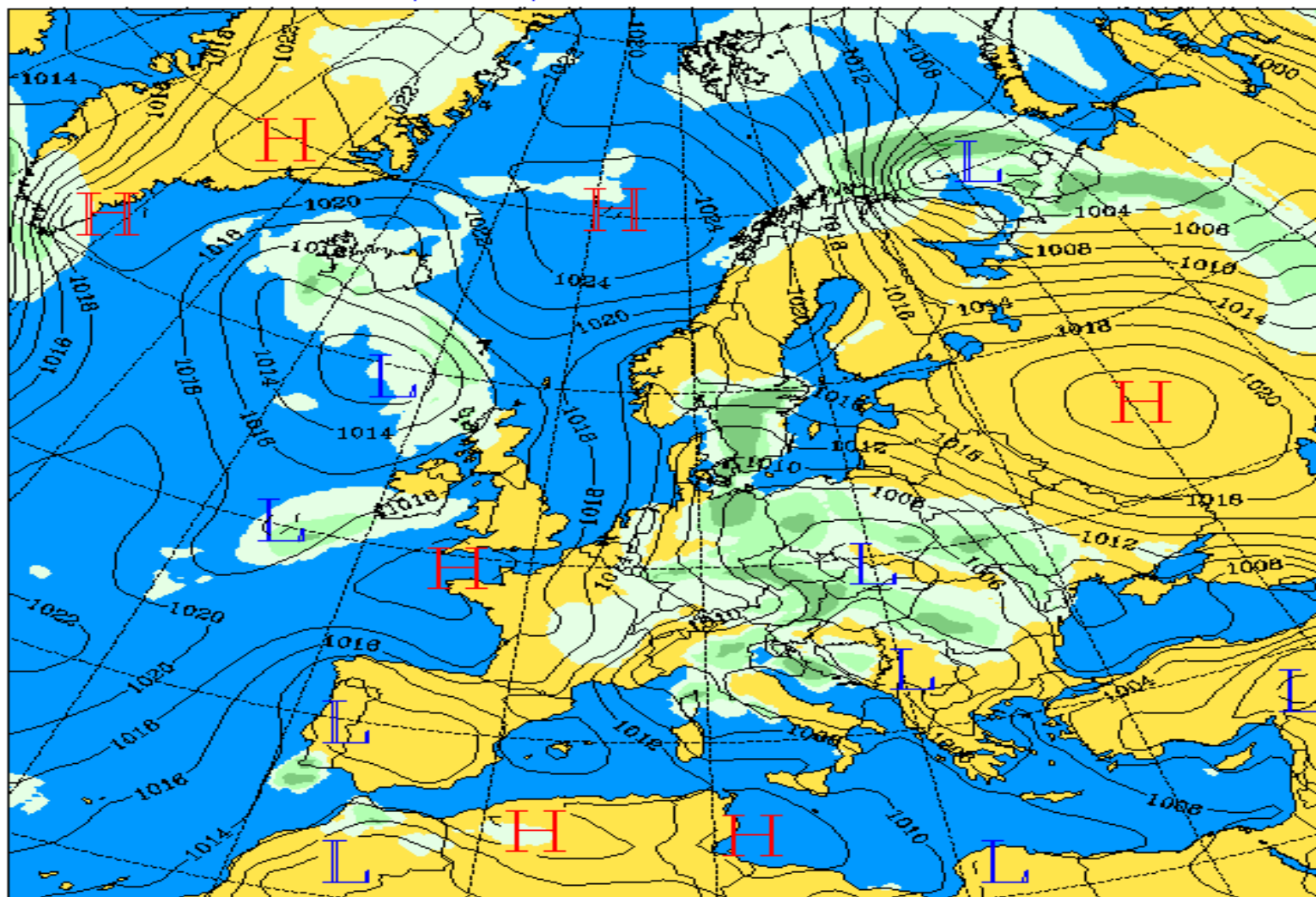
Prévision pluie 6-12h TU

Oceanor-Norway

SEAWATCH Forecast

6-h accumulated precipitation in mm

10.08.07 at 12 UTC



© 2000, AMS/ITC

0.1-2. 2.-5. 5.-15. 15.-30. 30.- 50. > 50.

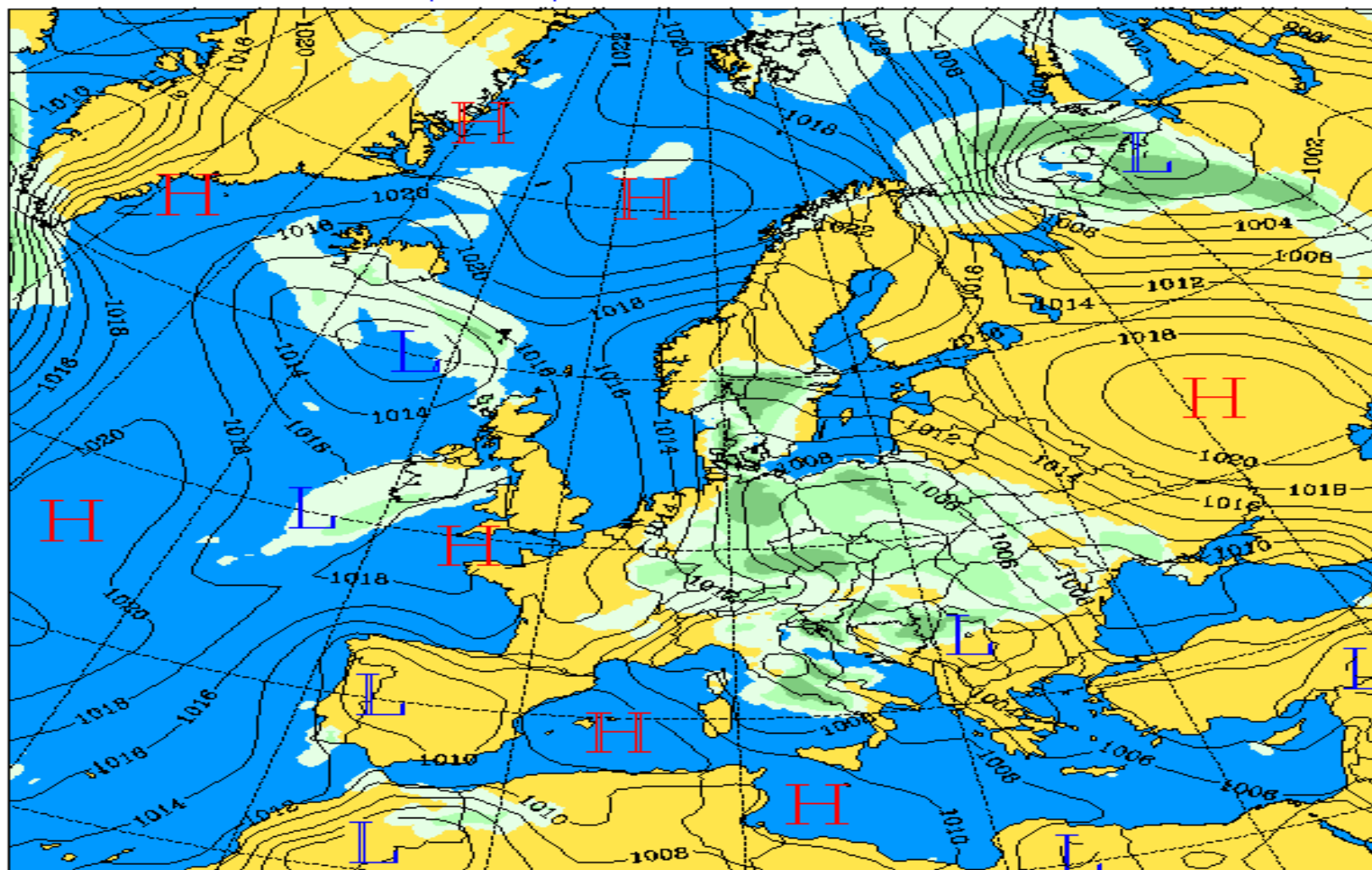
Prévision pluie 12-18h TU

Oceanor-Norway

SEAWATCH Forecast

6-h accumulated precipitation in mm

10.08.07 at 18 UTC

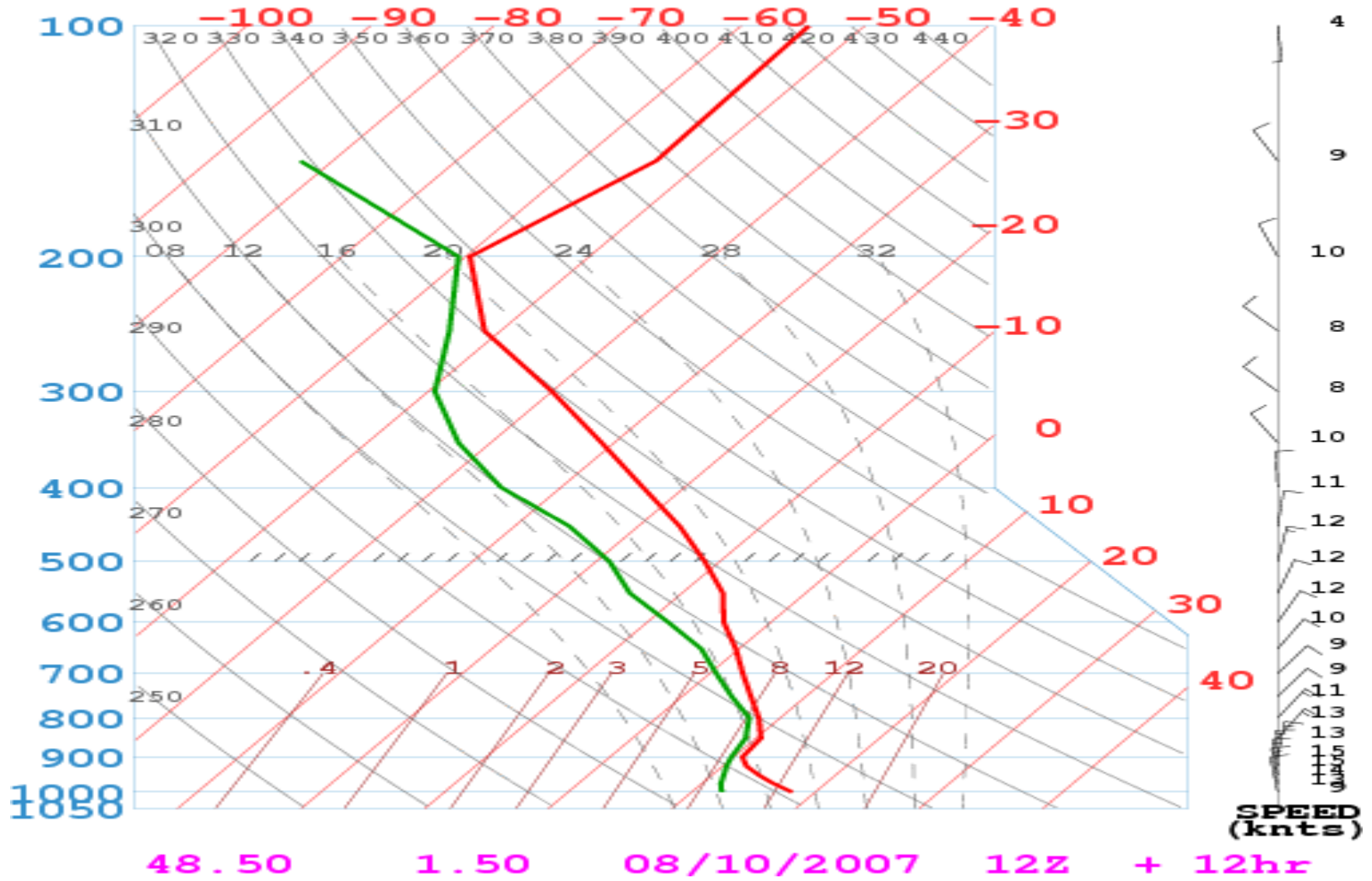


© 2000 AMARTEG

0.1-2. 2.-5. 5.-15. 15.-30. 30.-50. > 50.

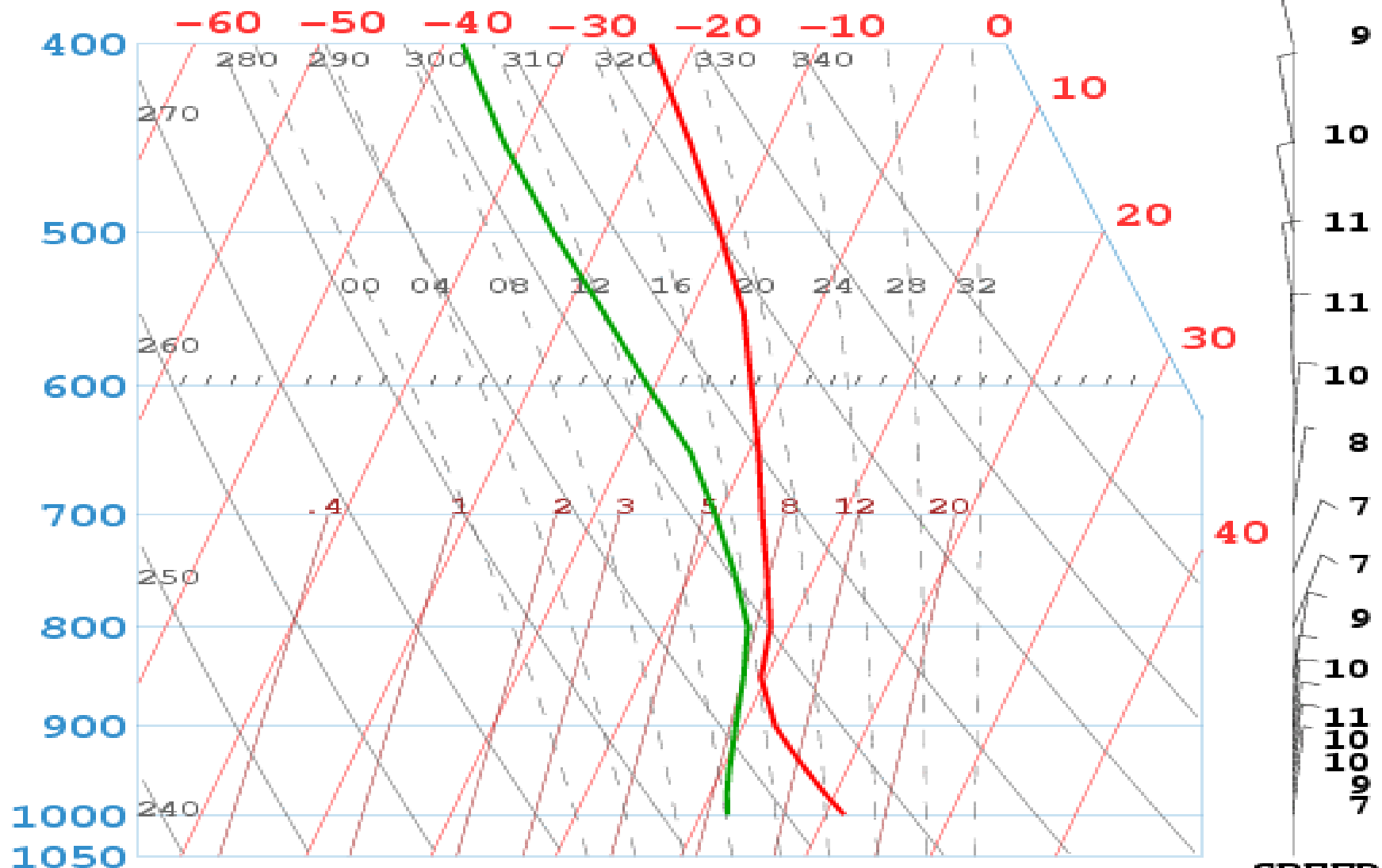
Sondage : Bailleau 12H TU

GFSFNH



Sondage : 150km W 15H TU

GFSENH

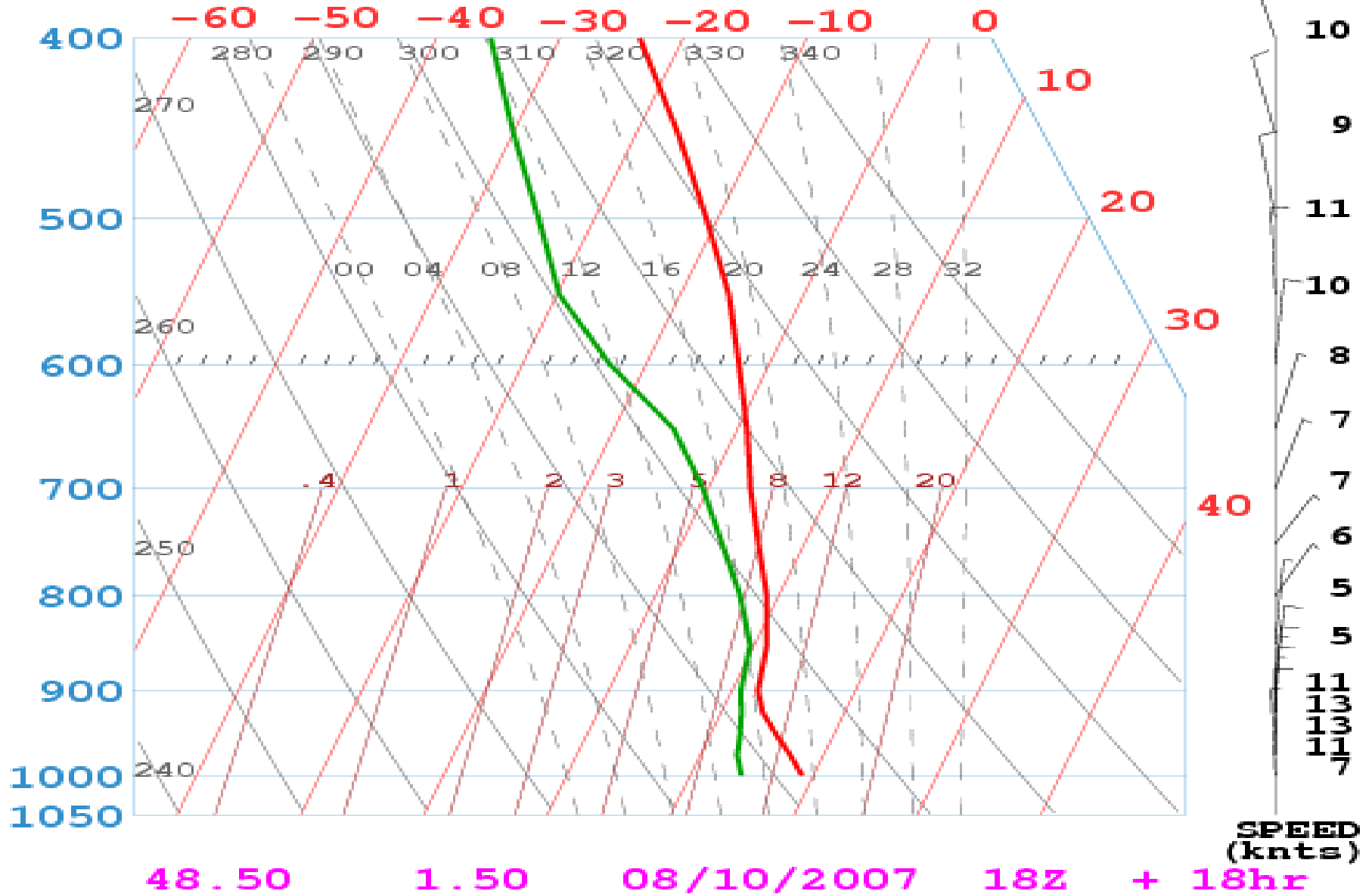


47.50 0.50 08/10/2007 15Z + 15hr

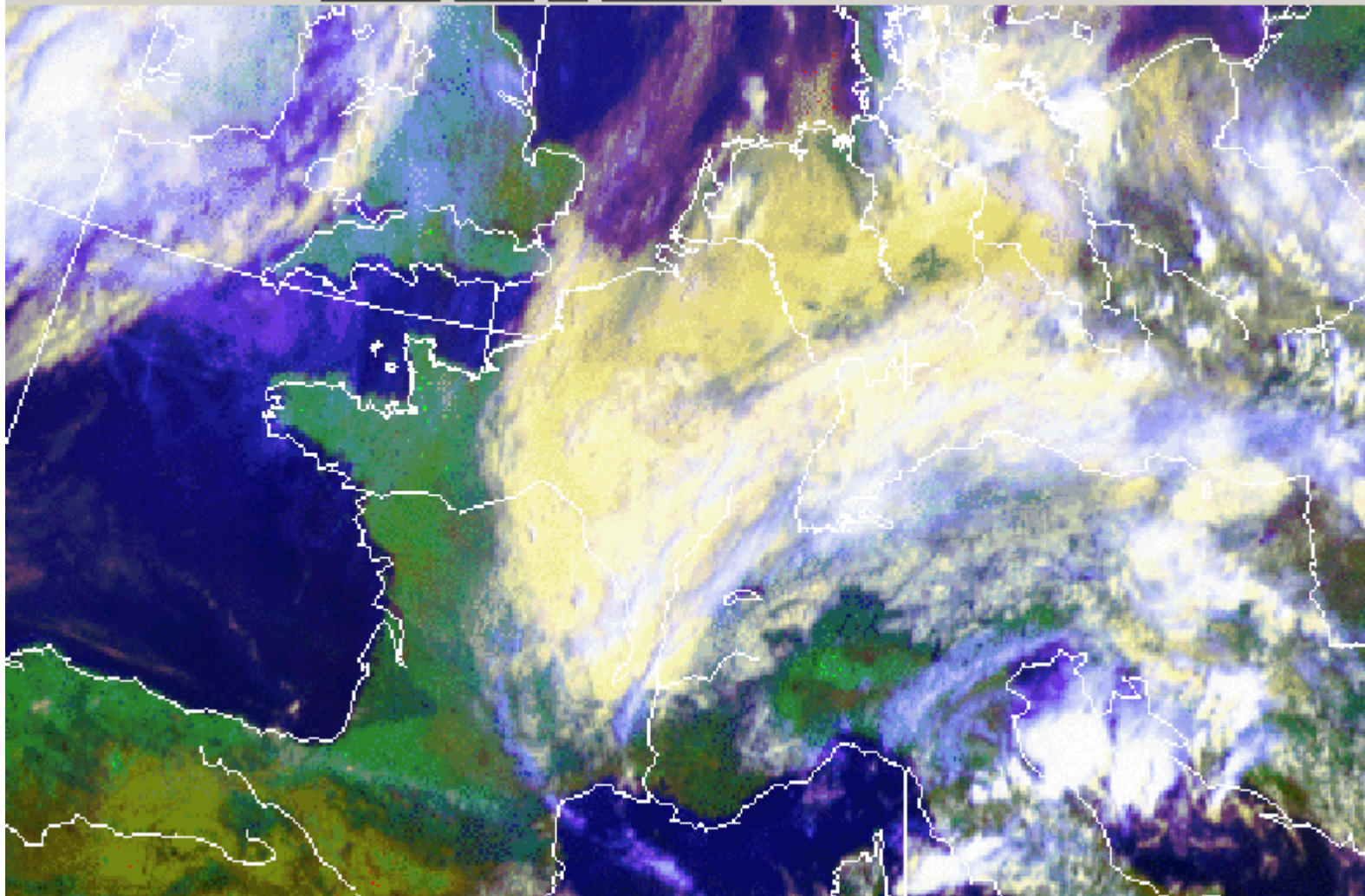
SPEED (knts)

Sondage : Bailleau 18H TU

GFSEFNH



Visible 12 TU



Summary

- **Perturbation at East meridian 1° East**
- **Moving ?????**
- **QNH:1018 Hpa**
- **Wind 360 10-15kt**

- **At 10H TU**
- **NO significant improvements**
- **NO FLIGHTS**

Visible 10h TU